

Numerical Analysis of Ca^{2+} Signaling in Rat Ventricular Myocytes with Realistic Transverse-Axial Tubular Geometry and Inhibited Sarcoplasmic Reticulum

Yuhui Cheng¹, Zeyun Yu², Masahiko Hoshijima³, Michael J. Holst⁴, Andrew D. McCulloch¹, J. Andrew McCammon^{5,6}, Anushka P. Michailova^{1*}

1 Department of Bioengineering, University of California San Diego, La Jolla, California, United States of America, **2** Department of Computer Science, University of Wisconsin, Milwaukee, Wisconsin, United States of America, **3** Department of Medicine, University of California San Diego, La Jolla, California, United States of America, **4** Department of Mathematics, University of California San Diego, La Jolla, California, United States of America, **5** Department of Chemistry and Biochemistry, Department of Pharmacology, University of California San Diego, La Jolla, California, United States of America, **6** Howard Hughes Medical Institute, University of California San Diego, La Jolla, California, United States of America

Abstract

The t-tubules of mammalian ventricular myocytes are invaginations of the cell membrane that occur at each Z-line. These invaginations branch within the cell to form a complex network that allows rapid propagation of the electrical signal, and hence synchronous rise of intracellular calcium (Ca^{2+}). To investigate how the t-tubule microanatomy and the distribution of membrane Ca^{2+} flux affect cardiac excitation-contraction coupling we developed a 3-D continuum model of Ca^{2+} signaling, buffering and diffusion in rat ventricular myocytes. The transverse-axial t-tubule geometry was derived from light microscopy structural data. To solve the nonlinear reaction-diffusion system we extended SMOL software tool (<http://mccammon.ucsd.edu/smol/>). The analysis suggests that the quantitative understanding of the Ca^{2+} signaling requires more accurate knowledge of the t-tubule ultra-structure and Ca^{2+} flux distribution along the sarcolemma. The results reveal the important role for mobile and stationary Ca^{2+} buffers, including the Ca^{2+} indicator dye. In agreement with experiment, in the presence of fluorescence dye and inhibited sarcoplasmic reticulum, the lack of detectable differences in the depolarization-evoked Ca^{2+} transients was found when the Ca^{2+} flux was heterogeneously distributed along the sarcolemma. In the absence of fluorescence dye, strongly non-uniform Ca^{2+} signals are predicted. Even at modest elevation of Ca^{2+} , reached during Ca^{2+} influx, large and steep Ca^{2+} gradients are found in the narrow sub-sarcolemmal space. The model predicts that the branched t-tubule structure and changes in the normal Ca^{2+} flux density along the cell membrane support initiation and propagation of Ca^{2+} waves in rat myocytes.

Citation: Cheng Y, Yu Z, Hoshijima M, Holst MJ, McCulloch AD, et al. (2010) Numerical Analysis of Ca^{2+} Signaling in Rat Ventricular Myocytes with Realistic Transverse-Axial Tubular Geometry and Inhibited Sarcoplasmic Reticulum. *PLoS Comput Biol* 6(10): e1000972. doi:10.1371/journal.pcbi.1000972

Editor: James Bassingthwaighe, University of Washington, United States of America

Received: December 17, 2009; **Accepted:** September 23, 2010; **Published:** October 28, 2010

Copyright: © 2010 Cheng et al. This is an open-access article distributed under the terms of the Creative Commons Attribution License, which permits unrestricted use, distribution, and reproduction in any medium, provided the original author and source are credited.

Funding: This work was supported by the National Biomedical Computational Resource (NIH grant 5P41 RR08605-16, <http://www.nih.gov/>). Dr. McCammon acknowledges additional support from NIH (R01 GM31749, <http://www.nih.gov/>), NSF (MCB-0506593, <http://www.nsf.gov/>), HHMI (<http://www.hhmi.org/>), and CTBP (NSF, PHY-0822283, <http://www.nsf.gov/>). The funders had no role in study design, data collection and analysis, decision to publish, or preparation of the manuscript.

Competing Interests: The authors have declared that no competing interests exist.

* E-mail: amihaylo@bioeng.ucsd.edu

Introduction

Ventricular cardiac muscle cells have deep invaginations of the extracellular space known as t-tubules [1–14]. In rodents, these invaginations branch within the cell to form a complex network that allows rapid propagation of the electrical signal (i.e. the action potential, AP) to the subcellular location (i.e. the sarcoplasmic reticulum, SR) where the intracellular Ca^{2+} required for the cell contraction is stored [14]. The release of Ca^{2+} from the SR depends on “trigger Ca^{2+} ” entering the cytosol from the extracellular space by activating sarcolemmal Ca^{2+} channels (L-type Ca^{2+} channels, LCC) and by Ca^{2+} entry via $\text{Na}^+/\text{Ca}^{2+}$ exchanger (NCX), [3,9,14,15]. The trigger Ca^{2+} activates SR Ca^{2+} release channels (ryanodine receptors, RyRs) by the process of “ Ca^{2+} -induces Ca^{2+} -release” (CICR) which amplifies the modest increase in intracellular Ca^{2+} concentration ($[\text{Ca}^{2+}]_i$) caused by the LCC and NCX influxes to provide sufficient Ca^{2+} for the proteins

regulating muscle force (i.e. troponin C, TN), [14]. Thus, by working together, the microanatomy of t-tubules and SR permits spatially homogeneous and synchronized SR Ca^{2+} release and spatially uniform Ca^{2+} transients throughout the cell [5,14,16]. It has been also observed that the spatially uniform Ca^{2+} transients might be achieved if the SR Ca^{2+} release and uptake are abolished [5]. Yet, despite a wealth of information on ventricular cell function and structure, the mechanisms causing the synchrony of activation and the similarity of levels of $[\text{Ca}^{2+}]_i$ across the myocyte still remain unclear.

In cardiac muscle cells, several computational models have been introduced to investigate the Ca^{2+} signaling, buffering and diffusion [17–19] and Ca^{2+} wave initialization and propagation [12,20–23]. All these studies, however, are conducted on simplified geometries (such as cylindrical or rectangular shapes) and it has been pointed out that a small geometric change (even in the case the change is uniformly applied) could greatly influence

Author Summary

In cardiac muscle cells, calcium (Ca²⁺) is best known for its role in contraction activation. A remarkable amount of quantitative data on cardiac cell structure, ion-transporting protein distributions and intracellular Ca²⁺ dynamics has been accumulated. Various alterations in the protein distributions or cell ultra-structure are now recognized to be the primary mechanisms of cardiac dysfunction in a diverse range of common pathologies including cardiac arrhythmias and hypertrophy. Using a 3-D computational model, incorporating more realistic transverse-axial t-tubule geometry and considering geometric irregularities and inhomogeneities in the distribution of ion-transporting proteins, we analyze several important spatial and temporal features of Ca²⁺ signaling in rat ventricular myocytes. This study demonstrates that the computational models could serve as powerful tools for prediction and analyses of how the Ca²⁺ dynamics and cardiac excitation-contraction coupling are regulated under normal conditions or certain pathologies. The use of computational and mathematical approaches will help also to better understand aspects of cell functions that are not currently amenable to experimental investigation.

the suggested homogeneous Ca²⁺ distribution by initiating wave propagation in the computer simulation [20,22]. Several laboratories, using common pool modeling approaches, have investigated also the effects of LCC and NCX distributions on global [Ca²⁺]_i; transients in dyadic, sub-sarcolemmal and cytosol compartments [10,24,25]. Recently, to examine how the distribution of Ca²⁺ flux along the sarcolemma affects Ca²⁺-entry and Ca²⁺ diffusion and buffering, we developed a 3-D continuum model in rat ventricular cells [19]. An important limitation of this model is that a cylindrical t-tubule geometry was assumed while several studies have provided evidence that in rodent ventricular myocytes the realistic t-tubule geometry is quite complex (with large local variations in the diameter and transverse-axial anatomies), [9–12]. These experimental findings suggest that replacing our idealistic t-tubule model with a realistic geometry is needed. The use of idealistic shapes will change the diffusion distances and realistic Ca²⁺-transporting protein localizations in plane and depth directions and consequently the predicted [Ca²⁺]_i distributions.

In the present study, we sought to develop a morphologically correct geometric model of the t-tubule and to use this model for computational studies of the intracellular Ca²⁺ dynamics. We examined the Ca²⁺ signaling in rat ventricular myocytes that had been treated with ryanodine and thapsigargin to eliminate Ca²⁺ release and uptake by the SR. By using published electrophysiological data and laser-scanning confocal [Ca²⁺]_i measurements, we were able to analyze several important spatial and temporal features of the Ca²⁺ signals in these cells. In this context, our goal was at least three-fold. The first aim was to develop a mathematical model that would be in qualitative or quantitative agreement with published experimental measurements on Ca²⁺ influx, and Ca²⁺ buffering and diffusion in rat ventricular cells with SR function inhibited [5,26]. Second, to use the model to investigate the importance of t-tubule ultra-structure and membrane Ca²⁺ flux distribution for the Ca²⁺ signals. The third task was to simulate the Ca²⁺ signals in the absence of fluorescent dye and to study the importance of the mobility of endogenous Ca²⁺ buffers (ATP and calmodulin) and altered extracellular Na⁺ ([Na⁺]_e) for the Ca²⁺ signals. The analysis suggests that the quantitative understanding of the Ca²⁺ signaling requires more

accurate knowledge of the t-tubule microanatomy and Ca²⁺ flux distribution along the sarcolemma. In agreement with experiment, with 100 μM Fluo-3, the lack of detectable differences in the depolarization-evoked Ca²⁺ transients was found when the Ca²⁺ flux was heterogeneously distributed along the sarcolemma. In the absence of Fluo-3, the predicted Ca²⁺ signals were strongly non-uniform. Even at modest elevation of Ca²⁺, reached during Ca²⁺ influx, large and steep Ca²⁺ gradients may develop in the narrow sub-sarcolemmal space. The model also predicts that branched t-tubule topology and changes in the normal Ca²⁺ flux density along the cell membrane support Ca²⁺ waves initiated at the sarcolemma. Preliminary results of this work have been presented to the Biophysical Society in abstract form [27].

Materials and Methods

3-D imaging and geometric modeling of t-tubule microanatomy

Combining light microscopy (LM) and electron microscopy (EM) together with 3-D tomographic reconstruction, Hayashi *et al.* [6] investigated 3-D topologies of important sub-cellular organelles, including dyadic clefts and t-tubules, in mouse ventricular myocytes. In particular, the use of two-photon microscopy (T-PM) in their studies had provided data showing detailed spatial organization of t-tubules (see Fig. 1A upper panel) that was important for the development of our realistic model for computational studies of intracellular Ca²⁺ dynamics. The gap between imaging and simulation involves two major steps: (1) extracting features (boundary or skeleton) from imaging data; (2) constructing geometric models (represented by meshes) from the detected features. In addition, image pre-processing is usually necessary for better feature extraction, when the original image is noisy or the contrast between features and background is low. With 3-D T-PM images, Yu and collaborators developed a set of image processing and analysis tools and using the mesh generator called GAMer [28] they were able to generate high-fidelity and quality meshes for 3-D t-tubular systems in mice [29] (see Fig. 1A lower panel).

The extreme intricacy of the t-tubule system in mice (with transverse-axial anatomies and large local variations in t-tubule diameter) has been observed in rat ventricular myocytes as well [4,11,30]. Because high-fidelity geometric models representing the realistic t-tubule topology in rats are currently not available, in this study we used the geometric model in mice of Yu's *et al.* [29]. To investigate the Ca²⁺ signaling in rat ventricular myocytes, we considered a small compartment containing a single t-tubule and its surrounding half-sarcomeres for two reasons: (a) the entire t-tubular system in a ventricular myocyte forms a roughly periodic pattern corresponding to individual sarcomere; and (b) a small model contains much fewer number of mesh nodes that would render numerical simulation significantly faster and more feasible in ordinary computers. The surrounding half-sarcomeres were modeled as a rectangular-shaped box of 2 μm × 2 μm in the plane of external sarcolemma and 5.96 μm in depth (Fig. 1B left panel and Table 1). As Yu's t-tubule model did not include the realistic cell surface, one of the box faces (the top red surface in Fig. 1B) was assumed to be the external cell membrane. The t-tubule inside this compartment was extracted from a sub-volume of the T-PM imaging data corresponding to the region indicated in Fig. 1A lower panel. To make it easier to handle boundary conditions in numerical analysis, we have "closed" the end of each branch, yielding a tree-like t-tubule model (see the yellow mesh in Fig 1B). These added "caps" were treated with the same boundary conditions as for the rest of the t-tubular surface. This simplified

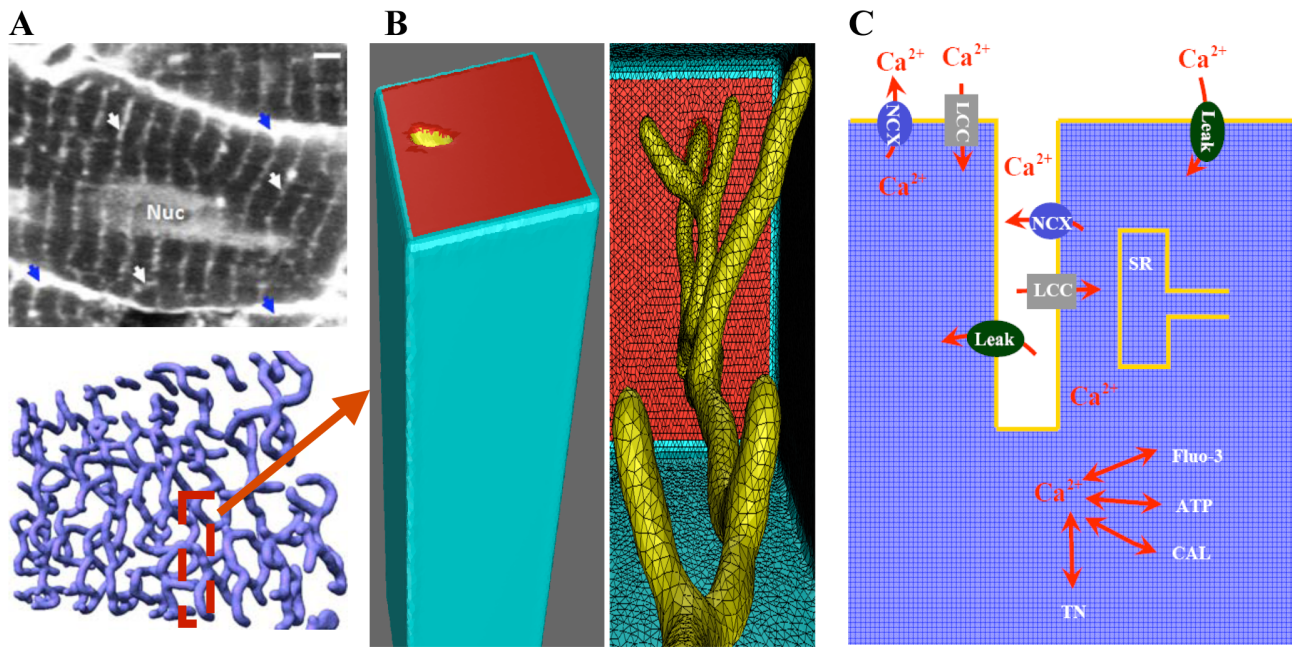


Figure 1. T-tubular network in mouse ventricular myocytes, geometric model, and diagram illustrating Ca²⁺ dynamics. (A, upper panel) Cardiac sarcolemma including t-tubules is visualized using a 2-photon microscopy: external membrane (blue arrows); t-tubules (white arrows); nucleus (Nuc); bar 2 μm . (A, lower panel) Geometric model of the t-tubule sub-system extracted from 2-photon microscopy image. (B) Expanded view of single t-tubule geometry and its surrounding half-sarcomeres. (C) Schematic drawing of Ca²⁺ entrance and extrusion via the cell membrane and Ca²⁺ buffering and diffusion inside the myocyte with the SR activity inhibited.
doi:10.1371/journal.pcbi.1000972.g001

treatment clearly could introduce some errors because these “caps” are artificial and no Ca²⁺-transporting protein should reside there. However, the errors should be negligible as the area of these “caps” is very small, compared to the rest of t-tubular surface. The t-tubule diameter varied from 0.19 μm to 0.469 μm and the t-tubule depth was 5.645 μm . The volume of the model compartment was estimated to be $\sim 23.31 \mu\text{m}^3$. The compartment membrane area was $\sim 9.00 \mu\text{m}^2$ where the percentage of cell membrane within t-tubule was 64% ($\sim 5.75 \mu\text{m}^2$) and within the external membrane 36% ($\sim 3.25 \mu\text{m}^2$), [10,11,31,32]. The accessible volume for Ca²⁺ was estimated to be $\sim 35\text{--}37\%$ of the total cytosolic volume (V_{acc}) $\sim 12.9\text{--}13.6 \text{ pL}$ in adult rat ventricular myocytes [33,34]. The sub-cellular aqueous volume of 35–37% assumes that: (1) myofilaments occupy 47–48% of the cell volume, mitochondria 34–36%, nucleus 0–2%, t-tubule system 0–1.2%, and SR lumen 3.5%; (2) 50% of the myofilament space is accessible for Ca²⁺ (i.e. contains water); (3) mitochondria and nuclei are not rapidly accessible for Ca²⁺; (4) the SR lumen is not accessible to Ca²⁺ in the presence of ryanodine and thapsigargin [18,33].

Distribution of Ca²⁺-transporting protein complexes along the cell membrane

Recent immunohistochemical studies have demonstrated that marked variations in the distribution of Ca²⁺-transporting protein complexes (L-type Ca²⁺ channel, Na⁺/Ca²⁺ exchanger) along the cell membrane probably exist [2,10,12,15,35–43]. The analysis suggests that most of the L-type Ca²⁺ channels are concentrated in the t-tubules (from 3 to 9 times more in the t-tubule membrane than on the external sarcolemma) [2,10,12,38,39] and that the concentration of LCC along the t-tubule probably increases toward the center of the cell [36,40].

Studies on the distribution of the main Ca²⁺ efflux pathway, the Na⁺/Ca²⁺ exchanger, are more controversial. All studies but one [41] have reported NCX to localize both to the external and t-tubule membrane, but most studies suggest that the NCX is 1.7 to 3.5 times more concentrated in the t-tubule membrane [15,34,36,42,43]. However, Kieval *et al.* data [43] indicate the NCX is more evenly distributed. In summary, the observed differences in the spatial distribution and molecular architecture of Ca²⁺ microdomains suggest that significant differences in the excitation-contraction coupling between the cell surface and cell interior may exist. However how the localization of Ca²⁺-transporting protein complexes along the sarcolemma regulates the intracellular Ca²⁺ signaling still remains uncertain.

Reaction-diffusion equations

In the current model, the effects of four exogenous and endogenous Ca²⁺ buffers (Fluo-3, ATP, calmodulin, troponin C) were considered (Fig. 1C). The endogenous stationary buffer troponin C (TN) was distributed uniformly throughout the cytosol but not on the cell membrane and in the sub-sarcolemmal space ($\sim 40\text{--}50 \text{ nm}$ in depth). The free Ca²⁺ and mobile buffers (Fluo-3, ATP, calmodulin) diffuse and react throughout the cytoplasm. The cell membrane and sarcomere box faces are subject to reflective boundary conditions. The nonlinear reaction-diffusion equations describing Ca²⁺ and buffers dynamics inside the model cell are:

$$\frac{\partial [Ca^{2+}]_i}{\partial t} = D_{Ca} \nabla^2 [Ca^{2+}]_i - \sum_{m=1}^3 R_{B_m} - R_{B_s} + J_{Ca_{flux}} \quad (1)$$

$$\frac{\partial [CaB_m]}{\partial t} = D_{CaB_m} \nabla^2 [CaB_m] + R_{B_m} \quad (2)$$

Table 1. Physical constants and cell geometry parameters.

Symbol	Definition	Value	Ref.
F	Faraday constant	96.5 C mmol ⁻¹	Physical constant
T	Temperature	295 K	Physical constant
R	Universal gas constant	8.314 J mol ⁻¹ K ⁻¹	Physical constant
V_{cell}	Cell volume	36.8 pL	[33]
C_m	Cell capacitance	324 pF	[33]
V_{acc}	Accessible volume for Ca ²⁺	12.9–13.6 pL	Estimated
V_{mc}	Compartment volume	23.31 μm ³	Estimated
S_{mc}	Compartment surface	9.00 μm ²	Estimated
T-tubule geometry			
r_{t-tub}	T-tubule radius	0.19–0.469 μm	[6]
dp_{t-tub}	T-tubule depth	5.645 μm	[6]
Rectangular-shaped box geometry			
d_{box-1}	Cell surface direction	2 μm	[12]
d_{box-2}	Cell surface direction	2 μm	[12]
dp_{box}	Depth	5.96 μm	[6]

doi:10.1371/journal.pcbi.1000972.t001

$$\frac{\partial[CaB_s]}{\partial t} = R_{B_s} \quad (3)$$

$$R_{B_m} = k_+^m ([B_m] - [CaB_m])[Ca^{2+}]_i - k_-^m [CaB_m] \quad (4)$$

$$R_{B_s} = k_+^s ([B_s] - [CaB_s])[Ca^{2+}]_i - k_-^s [CaB_s] \quad (5)$$

where: $[B_m]$ represents the concentration of mobile buffer Fluo-3, ATP or calmodulin; $[B_s]$ is the concentration stationary buffer troponin C.

The diffusion coefficients for Ca²⁺, CaATP, CaCal and CaFluo as well as the total buffer concentrations and buffer rate constants used in the model are shown in Table 2. In the model we also assume: (1) isotropic diffusion for Ca²⁺ and all mobile buffers [12]; (2) Ca²⁺ binds to Fluo-3, calmodulin, ATP, and TN without cooperativity; (3) the initial total concentrations of the mobile buffers are spatially uniform; (4) the diffusion coefficients of Fluo-3, ATP or calmodulin with bound Ca²⁺ are equal to the diffusion coefficients of free Fluo-3, ATP or calmodulin.

The total Ca²⁺ flux (J_{Caflux}) throughout the t-tubule and external membrane is:

$$J_{Caflux} = J_{Ca} + J_{NCX} + J_{M-leak} \quad (6)$$

where: J_{Ca} - total LCC Ca²⁺ influx; J_{NCX} - total NCX Ca²⁺ flux; J_{M-leak} - total membrane Ca²⁺ leak.

To describe L-type Ca²⁺ current, Na⁺/Ca²⁺ exchanger, Ca²⁺ leak current densities we used the following expressions:

$$I_{Ca}(t) = I_{Ca0}f(t) \quad (7)$$

Table 2. Calcium and buffer reaction-diffusion parameters.

Symbol	Definition	Value	Ref.
Ca²⁺ and buffer concentrations			
$[Ca^{2+}]_e$	Extracellular Ca ²⁺ concentration	1000 μM	[33]
$[Ca^{2+}]_0$	Resting Ca ²⁺ concentration	0.1 μM	[33]
$[Fluo]$	Total Fluo-3 concentration	100 μM	[18]
$[ATP]$	Total free ATP concentration	260 μM	[18]
$[TN]$	Total troponin concentration	70 μM	[18]
$[Cal]$	Total calmodulin concentration	24 μM	[18]
Diffusion coefficients (at 22°C)			
D_{Ca}	Diffusion coefficient for Ca ²⁺	0.39 μm ² ms ⁻¹	[18]
D_{CaFluo}	Diffusion coefficient for CaFluo	0.1 μm ² ms ⁻¹	[18]
D_{CaATP}	Diffusion coefficient for CaATP	0.168 μm ² ms ⁻¹	[18]
D_{CaCal}	Diffusion coefficient for CaCal	0.025 μm ² ms ⁻¹	[18]
Rate coefficients and dissociation constants (at 22°C)			
k_+^{CaTN}	Ca ²⁺ on-rate constant for TN	0.04 μM ⁻¹ ms ⁻¹	[19]
k_-^{CaTN}	Ca ²⁺ off-rate constant for TN	0.04 ms ⁻¹	[19]
K_D^{TN}	Ca ²⁺ dissociation constant for TN	1 μM	[19]
k_+^{CaATP}	Ca ²⁺ on-rate constant for CaATP	0.225 μM ⁻¹ ms ⁻¹	[18]
k_-^{CaATP}	Ca ²⁺ off-rate constant for CaATP	45 ms ⁻¹	[18]
K_D^{ATP}	Ca ²⁺ dissociation constant for ATP	200 μM	[18]
k_+^{CaFluo}	Ca ²⁺ on-rate constant for CaFluo	0.23 μM ⁻¹ ms ⁻¹	[18]
k_-^{CaFluo}	Ca ²⁺ off-rate constant for CaFluo	0.17 ms ⁻¹	[18]
K_D^{Fluo}	Ca ²⁺ dissociation constant for Fluo	0.739 μM	[18]
k_+^{CaCal}	Ca ²⁺ on-rate constant for Cal	0.125 μM ⁻¹ ms ⁻¹	[18]
k_-^{CaCal}	Ca ²⁺ off-rate constant for Cal	0.2975 ms ⁻¹	[18]
K_D^{Cal}	Ca ²⁺ dissociation constant for Cal	2.38 μM	[18]

doi:10.1371/journal.pcbi.1000972.t002

$$f(t) = \begin{cases} 1.14380t & 0 < t < t_a \\ 1.73189 + 5.11444e^{-\frac{t}{30.31164}} & t_a \leq t < t_b \\ 0 & t \geq t_b \end{cases} \quad (8)$$

$$I_{NCX} =$$

$$g_{NCX} \frac{e^{\eta VF/RT} [Na^+]_i^3 [Ca^{2+}]_e - e^{(\eta-1)VF/RT} [Na^+]_e^3 [Ca^{2+}]_i}{(k_{m,Na}^3 + [Na^+]_e^3)(k_{m,Ca} + [Ca^{2+}]_e)(1 + k_{sat}e^{(\eta-1)VF/RT})} \quad (9)$$

$$I_{M-leak} = g_{M-leak} ([Ca^{2+}]_e - [Ca^{2+}]_i) \quad (10)$$

Flux parameter values were estimated or taken from the literature (see Table 3). In this study, the Ca²⁺ leak is not actually a particular “leak protein”. The Ca²⁺ leak was included and adjusted so that at rest Ca²⁺ influx via Ca²⁺ leak to match Ca²⁺ efflux via NCX thus no net movement across the cell membrane to occur.

In the model, each current density (I_i) was converted to Ca²⁺ flux (J_i) by using the experimentally suggested surface to volume ratio ($\frac{C_m}{V_{cell}} \sim 8.8$ pF/pL) in adult rat ventricular myocytes [32,33]:

Table 3. Membrane calcium fluxes parameters.

Symbol	Definition	Value	Ref.
L-type Ca²⁺ current			
I_{Ca_o}	Constant	1	[18]
t_a	Constant	4 ms	[26]
t_b	Constant	70 ms	[26]
Na⁺/Ca²⁺ exchange current			
$[Na^+]_e$	Extracellular Na ⁺ concentration	140 mM	[33]
$[Na^+]_i$	Resting Na ⁺ concentration	10 mM	[33]
g_{NCX}	Pump rate of NCX	38.5 $\mu\text{M ms}^{-1}$	[70]
η	Voltage dependence of NCX control	0.35	[70]
$k_{m,Na}$	Na ⁺ half saturation of NCX	87.5 mM	[70]
$k_{m,Ca}$	Ca ²⁺ half saturation of NCX	1380 μM	[70]
k_{sat}	Low potential saturation factor of NCX	0.1	[70]
Membrane Ca²⁺ leak			
$g_{M_Leak}^{140mM[Na^+]_e}$	Conductance	3.4e-6 $\mu\text{M mV}^{-1}\text{ms}^{-1}$	Estimated
$g_{M_Leak}^{0mM[Na^+]_e}$	Conductance	-6.8e-6 $\mu\text{M mV}^{-1}\text{ms}^{-1}$	Estimated

doi:10.1371/journal.pcbi.1000972.t003

$$J_i = \left(\frac{1}{2F} \frac{C_m}{V_{cell}} \right) I_i \quad (11)$$

Then, the total compartment Ca²⁺ flux ($J_{Ca_{flux}}$) was computed by multiplying each total J_i with the model cell volume (V_{mc}), and distributing $J_{Ca_{flux}}$ to the external and t-tubule membrane according to the prescribed Ca²⁺-handling protein concentration ratio.

The voltage-clamp protocol (holding potential -50mV, electric pulse of 10mV for 70ms) and whole-cell L-type Ca²⁺ current were derived from Zahradnikova *et al.* data with the blocked SR activity [26]. In this study, each simulation started with a basal cytosolic Ca²⁺ of 100 nM, basal cytosolic Na⁺ of 10 mM and buffers in equilibrium. The extracellular Ca²⁺ concentration ($[Ca^{2+}]_e$) was 1 mM and remained constant. Unless specified otherwise in the Figure legends or in the text, the extracellular Na⁺ concentration ($[Na^+]_e$) was 140 mM and $g_{M_Leak}^{140mM[Na^+]_e}$ 3.4 $\mu\text{M mV}^{-1}\text{ms}^{-1}$.

Numerical algorithms and software

In finite element methods, a complex domain needs to be discretized into a number of small elements (such as triangles or tetrahedra). This process is usually referred to as mesh generation [28,44]. Although different types of meshes may be generated depending on the numerical solvers to be employed, we restrict ourselves to triangular (surface) and tetrahedral (volumetric) mesh generation as commonly used in biomedical simulation. In the present simulation, the number of finite element nodes and tetrahedral elements are 50,262 and 221,076, respectively.

The nonlinear reaction diffusion system was solved by a finite difference method in time and finite element method in space using our SMOL software tool (Smoluchowski Solver, <http://mccammon.ucsd.edu/smol/>) with the time step of 4 ms. It takes around 20 minutes to run 400 ms snapshots with a single Intel

Xeon X5355 processor. The SMOL program utilizes libraries from the finite element tool kit (FETK), which previously has been used in several molecular level studies [45–49]. One bottleneck for dynamic 3-D simulation of nonlinear reaction diffusion system is the computing complexity involved in solving the problem. Here we successfully extended SMOL to solve multiple coupled partial differential equations with nonlinear ordinary equations. Multiple tests demonstrate that our SMOL program is quite robust and flexible for various boundary and initial conditions. The simulation results were visualized using GMV mesh viewers [50]. Post-processing and data analyses were implemented by customized Python, MATLAB 2008b (The MathWorks, Natick, MA) scripts and Xmgrace software [51]. A version control system, subversion, was used to monitor the development of software [52].

Results

Numerical simulation of experimental recordings of Ca²⁺ influx and Ca²⁺ concentration changes in rat ventricular myocytes

In agreement with the reported experimental data [2,10,12,36,38–40], the spatial patterns of $[Ca^{2+}]_i$ were calculated assuming LCC current density: (1) heterogeneously distributed along the cell surface; (2) six times higher and uniform in the t-tubule membrane; or (3) homogeneously distributed along the sarcolemma. In cases (1–2) the NCX flux density was assumed three times higher in the t-tubule and in case (3) NCX was evenly distributed along the sarcolemma. In this study, Ca²⁺ leak density was homogeneously distributed along the cell membrane with respect to all distribution choices of LCC and NCX. In case (1), the 3-D distribution of LCC current was computed by combining the cluster density and fluorescent intensity plots, see Fig. 2A. The data were then scaled and fitted by a cubic polynomial:

$$f(x) = p_1x^3 + p_2x^2 + p_3x + p_4 \quad (12)$$

where: x is the distance from the external cell surface.

The parameter values of the polynomial (p_j , $j = 1–4$) are shown in Table 4. This polynomial was further scaled by a single factor C (see Table 4) such that the total Ca²⁺ flux along the t-tubule membrane remained unchanged by redistributing the Ca²⁺ fluxes. To fit the whole-cell LCC current density to the reported data in rat myocytes with SR release inhibited [26], we used a shape preserving function, (see Eq. 8 and Fig. 2B).

Consistent with the Cheng *et al.* experiment [5], where the fluorescence signal was recorded along the single scan-lane starting and ending outside the cell and crossing the center of the cell, the model t-tubule was chosen to cross the cell center and the scanned line was located at 200nm away from the t-tubule membrane (see Fig. 1A and Fig. 3). To gain more detailed insights of how the predicted Ca²⁺ signals are regulated within this geometrically irregular micro-domain we examined $[Ca^{2+}]_i$ at two different line-scan positions: 200 nm, angle 120°; 200 nm, angle 60° (see Fig. 3).

Model results in Figs. 4–5 were computed for conditions approximating those of the experiment by Cheng *et al.* [5], who examined Ca²⁺ signals in voltage-clamped rat myocytes in the presence of 100 μM Fluo-3 and pharmacological blockade of the SR (see Fig. 4L). The computed line-scan images and local Ca²⁺ time-courses are shown in Figs. 4F–4K.

These results demonstrate that with LCC heterogeneous or LCC six times higher in the t-tubule: (1) predicted Ca²⁺ concentration profiles were non-uniform when $t < 100$ ms but the variations in $[Ca^{2+}]_i$ seem to be within the range of

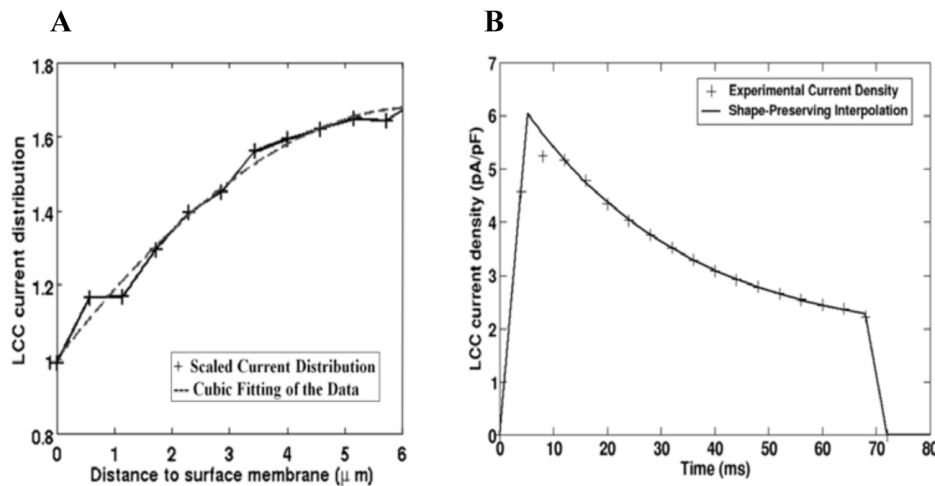


Figure 2. L-type Ca²⁺ current. (A) The distribution of L-type Ca²⁺ current is computed (*dashed line*) by multiplying the experimentally measured cluster density and fluorescent intensity plots (*solid line*), [36]. (B) The L-type Ca²⁺ current density is fitted and plotted (*solid line*) using shape preserving function of the data reported in rats with SR blocked (*dotted line*), [26]. doi:10.1371/journal.pcbi.1000972.g002

experimental noise in Fig. 4L; (2) [Ca²⁺]_i was more evenly distributed when $t > 100$ ms, (Figs. 4F–G, Figs. 4I–J, Video S1). To delineate further the suggested spatial differences in [Ca²⁺]_i (see Figs. 4F–H), we introduced a quantity called ‘spatial Ca²⁺ heterogeneity’ (SCH). The SCH is defined to be the difference of the maximal and minimal [Ca²⁺]_i values, normalized by the maximal value at given reference point along the line-scan (0.17 μm, 3.09 μm, 5.45 μm) in given moment t_j , (see Figs. 4I–K). High SCH suggests non-uniform [Ca²⁺]_i distribution and SCH of zero indicates spatially uniform [Ca²⁺]_i distribution. The histogram in Fig. 4M shows that assuming LCC heterogeneous versus LCC 6 times higher in the t-tubule decreased SCH(_{t_{lca-peak}}) by 1.6 folds, SCH(_{t_{70 ms}}) by 2.29 folds, SCH(_{[Ca_i]-peak}) by 2.34 folds, SCH(_{t_{100ms}}) by 2.87 folds, and SCH(_{t_{200ms}}) by 8.45 folds. These findings demonstrate that the predicted [Ca²⁺]_i distribution with LCC heterogeneous more closely resembles the Cheng *et al.* experimental findings [5], (compare Figs. 4I and 4L). Finally, the model predicts strongly non-uniform Ca²⁺ transients when the LCC, NCX and Ca²⁺ leak fluxes were uniformly distributed throughout the cell surface (Figs. 4H, 4K, 4M). In addition, Video S1 (*see right panel*) demonstrates that here the Ca²⁺ signal spreads from the external membrane to the cell center as a continuum wave but after LCC channel closing ($t \sim 72$ ms) this wave faltered.

Predicted global [Ca²⁺]_i transient, Na⁺/Ca²⁺ exchanger, and Ca²⁺ leak currents with LCC pathways heterogeneously distributed (as in Fig. 4F) are shown in Figs. 4E and 4C–D. Figure 4C demonstrates that: (1) the depolarization of cell membrane reversed the rest exchanger’s direction (i.e. in the interval 0ms–70ms NCX operated in Ca²⁺ entry mode) while when repolarization occurred the flow of Ca²⁺ through NCX was reversed

again (i.e. in the interval 70ms–400 ms NCX operated in Ca²⁺ exit mode); (2) upon returning to resting voltage of -50 mV the exchanger’s rate rapidly increased ($J_{NCX}(t=70ms) > J_{NCX}(t=0ms)$) while $J_{M-leak}(t=70ms)$ rate remained unchanged (note J_{M-leak} is not voltage-dependent) thus causing fast extrusion of Ca²⁺ out of the cell and subsequent sudden drop in the local and global [Ca²⁺]_i. Figures 4F–K illustrate also that the global and all local Ca²⁺ transients reached the peak after ~ 76 ms and that [Ca²⁺]_i levels were higher near the t-tubule mouth because the density of t-tubule branches was higher in this region and close topological proximity of the external membrane additionally increased the relative amount of the entering Ca²⁺. Due to the higher [Ca²⁺]_i gradient under the outer cell edge ($t \sim 70$ ms) Ca²⁺ diffused toward the cell center and when $J_{NCX}(t > 70ms) / J_{M-leak}(t > 70ms)$ ratio along the cell membrane became approximately equal to $J_{NCX}(t=0ms) / J_{M-leak}(t=0ms)$ ratio a new equilibrium level of [Ca²⁺]_i (~ 0.16 μM) was reached. Intracellular Ca²⁺ equilibrated faster when Ca²⁺ flux was more concentrated in the t-tubule membrane because [Ca²⁺]_i gradient near the t-tubule mouth was lower there than [Ca²⁺]_i gradient with Ca²⁺ transporting complexes distributed homogeneously. Additional reasons for the observed rapid equilibrium of [Ca²⁺]_i may be that [Na⁺]_i was kept constant (in contrast to existing evidence for the presence of local sub-sarcolemmal [Na⁺]_i gradients on the action potential time-scale [33,53]) or that the realistic distribution of NCX flux may be differ as assumed in the model. Finally, the results demonstrate that the computed average [Ca²⁺]_i peak of 160–185 nM (see Figs. 4E, 4I–4J), is comparable with the measured one of about 163 nM when the SR release and uptake were inhibited [5].

This model is also able to predict how the Ca²⁺ transients are regulated at different line-scan positions within this geometrically irregular micro-domain. Note, due to the technical limitations the Cheng *et al.* experiment is not able to suggest where exactly the scanned line is positioned with regard to the specific t-tubule, but the Cheng *et al.* measurements [5] strongly suggest the similarity of [Ca²⁺]_i at the peripheral and deeper cytoplasm when the SR activity is abolished. For this reason, we examined the Ca²⁺ profiles (LCC heterogeneous along the t-tubule, Fig. 4F) positioning the line-scan at 200 nm and angle 60° (see Fig. 3) or positioning the line-scan at 50, 100, 200, 300 or 400 nm at

Table 4. Parameter values of the polynomial for L-type Ca²⁺ current distribution along the t-tubule.

Symbol	C	p ₁	p ₂	p ₃	p ₄
L-type Ca ²⁺ current	0.4515	-4.1379e-4	-1.1722e-2	1.978e-1	1.0033

doi:10.1371/journal.pcbi.1000972.t004

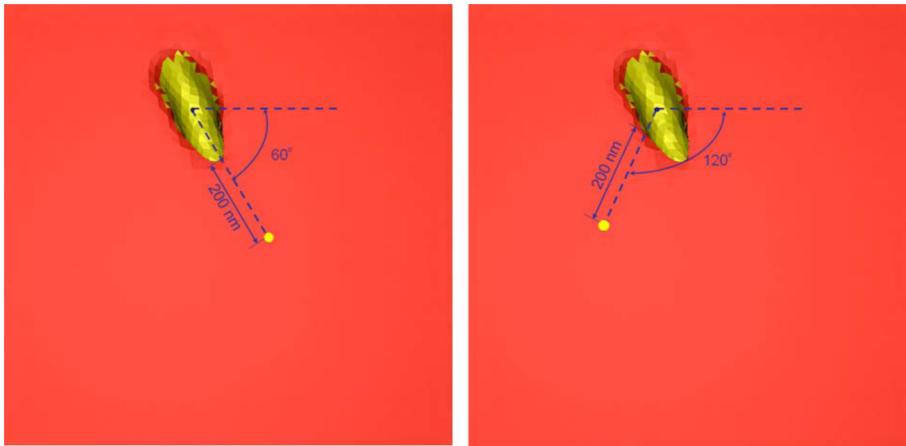


Figure 3. Line-scan position. Diagrams illustrating external membrane, t-tubule mouth, and positions of scanning line (yellow spots) where the changes in local $[Ca^{2+}]_i$ have been visualized and examined.
doi:10.1371/journal.pcbi.1000972.g003

different angles. No visible differences in the visualized spatial Ca^{2+} profiles were found (*data not shown*).

The 3-D Ca^{2+} concentration distributions and spatial Ca^{2+} profiles at Ca^{2+} peak (76 ms) are shown in Figs. 5A–D. These model results demonstrate that the Ca^{2+} concentration near the external membrane decreased while $[Ca^{2+}]_i$ in the cell interior increased when Ca^{2+} transporters were uniformly distributed and after that heterogeneously redistributed. The jumps in Fig. 5D show the predicted local Ca^{2+} flux ($J_{Ca_{flux}}$) at $[Ca^{2+}]_i$ peak in the regions where the scanning line of interest is crossing the t-tubule membrane.

Additional interesting model findings are that: (1) large and steep $[Ca^{2+}]_i$ gradients were predicted inside the sub-sarcolemmal 3-D space (see Video S1); (2) the global Ca^{2+} time-course and time to $[Ca^{2+}]_i$ peak did not depend on whether Ca^{2+} fluxes are distributed homogeneously or heterogeneously along the sarcolemma (*data not shown*); (3) redistributing NCX flux uniformly via the sarcolemma was not able to alter significantly the predicted Ca^{2+} signals in Fig. 4F (*data not shown*).

In this study the value of $390 \mu m^2 s^{-1}$ for diffusion coefficient of free Ca^{2+} and published buffer diffusion coefficients and parameters were used to compare the calculated Ca^{2+} signals with the Cheng's et al. fluorescence Ca^{2+} signals recorded in rats [5]. It has been suggest, however, that the effective diffusion of free Ca^{2+} in the cytosol (D_{Ca}^{eff}) will be slowed down because the exogenous and endogenous Ca^{2+} buffers and free Ca^{2+} concentrations are able to affect Ca^{2+} diffusion strikingly [18,19,54–62]. The measurements of Allbritton et al. [54] report a value of $5\text{--}21 \mu m^2 s^{-1}$ for D_{Ca}^{eff} at low free $[Ca^{2+}]_i$ when a value of $\sim 223 \mu m^2 s^{-1}$ is assumed for D_{Ca} . During Allbritton's et al. in vitro experiments Ca^{2+} sequestration by the SR, mitochondria and ATP was inhibited and only mobile calmodulin and stationary troponin C were present in the cytosolic extract. It is possible to estimate D_{Ca}^{eff} (0 μM Fluo-3, 0 μM ATP), using a simplified equation (see Eq. 13), because in this study the predicted maximal Ca^{2+} elevations were sufficiently small ($[Ca^{2+}]_{i_{max}} \leq 0.4 \mu M$) and the diffusion coefficients for Ca^{2+} -bound and free mobile buffer forms were assumed equal [18,19,58,59]. Our calculations predict a value of $\sim 8 \mu m^2 s^{-1}$ for D_{Ca}^{eff} when D_{Ca} was $390 \mu m^2 s^{-1}$ and $D_{Ca}^{eff} \sim 6 \mu m^2 s^{-1}$ when D_{Ca} was $223 \mu m^2 s^{-1}$. Therefore, the estimated value for D_{Ca}^{eff} ($\sim 8 \mu m^2 s^{-1}$) is in reasonable agreement with the experimental observation.

$$D_{Ca}^{eff} = \frac{D_{Ca} + \sum_{i=1}^M D_{m,i} \frac{[B_m]_i}{K_D^{[B_m]_i}}}{1 + \sum_{i=1}^M \frac{[B_m]_i}{K_D^{[B_m]_i}} + \sum_{j=1}^S \frac{[B_s]_j}{K_D^{[B_s]_j}}} \quad (13)$$

as $[Ca^{2+}]_{i_{max}} < K_D^{[B_m]_i}$

We could not find experimental data suggesting D_{Ca}^{eff} (260 μM ATP, 70 μM TN, 24 μM Cal) or D_{Ca}^{eff} (100 μM Fluo-3, 260 μM ATP, 70 μM TN, 24 μM Cal) in the solution. Therefore, we used published concentrations of Ca^{2+} binding proteins and published diffusion and dissociation constants ($K_D^{B_k} = k_{-}^{B_k} / k_{+}^{B_k}$) to estimate the effective diffusion constants of free Ca^{2+} in the presence of ATP or Fluo-3 and ATP in the cytosol. Our calculations indicate that adding 260 μM ATP in the solution accelerated D_{Ca}^{eff} ($\sim 10.4 \mu m^2 s^{-1}$) and that D_{Ca}^{eff} increased additionally when 100 μM Fluo-3 was added ($D_{Ca}^{eff} \sim 66 \mu m^2 s^{-1}$). Furthermore, our studies suggest that in the presence of 100 μM Fluo-3 and LCC heterogeneous Ca^{2+} binding and diffusion of ATP and calmodulin could not affected significantly the predicted $[Ca^{2+}]_i$ distributions (*data not shown*).

During simulations of SR Ca^{2+} release into the diadic cleft, a major effect of the stationary phospholipids Ca^{2+} binding sites has been suggested [17,18]. To examine the impact of the phospholipids on the much smaller Ca^{2+} signals (arising from Ca^{2+} influx via Ca^{2+} current only), we included this buffer in our model. The results demonstrated that the phospholipids had only a limited effect on the calculated Ca^{2+} signals in the sub-sarcolemmal region (0 μM Fluo-3, 260 μM ATP, 24 μM calmodulin) and that this effect was even smaller when 100 μM Fluo-3 was included (*data not shown*).

Model estimations of Ca^{2+} distribution under varying conditions

Ca^{2+} concentration changes in the absence of fluorescence dye and Ca^{2+} pathways heterogeneously distributed via the sarcolemma. This model is also able to predict the spatial $[Ca^{2+}]_i$ signals that would occur in the absence of Fluo-3 (note experiments without fluorescent dye cannot be performed because

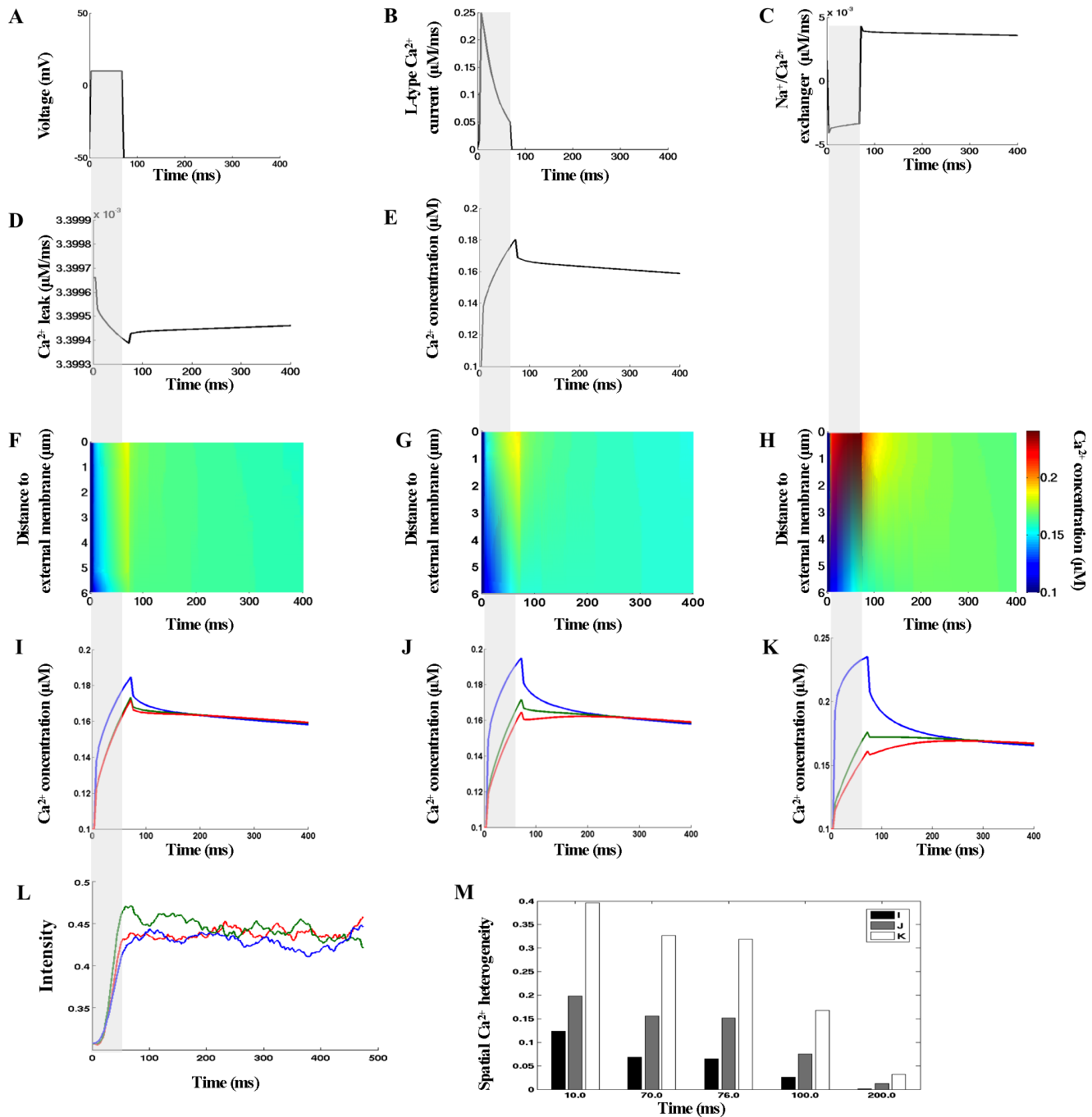


Figure 4. Calcium signals arising from the ionic fluxes via the external and t-tubule membrane in the presence of 100 μM Fluo-3. (A–B) The voltage-clamp protocol and whole-cell L-type Ca^{2+} current. (C–E) Predicted global $\text{Na}^+/\text{Ca}^{2+}$ and Ca^{2+} leak currents and global Ca^{2+} transient when no detectable differences in $[\text{Ca}^{2+}]_i$ are found (see panel F). (F–H) Calcium concentrations visualized as line-scan images in transverse cell direction. (I–K) Local Ca^{2+} transients taken at three featured spots along the scanning line of interest: 0.17 μm – blue lines; 3.09 μm – green lines; 5.45 μm – red lines. In (F) and (I) the L-type Ca^{2+} current density followed heterogeneous distribution along the length of t-tubule as shown in Fig. 2A. In (G) and (J) the L-type Ca^{2+} current density was uniform along the t-tubule and six times higher than in external membrane. In (H) and (K) the L-type Ca^{2+} current density was homogeneous throughout the cell surface. In (F–G) $\text{Na}^+/\text{Ca}^{2+}$ flux density was three times higher in the t-tubule and Ca^{2+} leak homogeneously distributed. In (H) $\text{Na}^+/\text{Ca}^{2+}$ exchanger and Ca^{2+} leak were homogeneously distributed via the sarcolemma. (L) Local Ca^{2+} time-courses with re-plot from experimental data [5]. The re-plots were taken along the scanned line at 0 μm (blue), 3.96 μm (green) and 5.65 μm (red) from the near surface location. (M) Estimated SCH values with respect to the three flux distribution choices. In this numerical experiment the line-scan was positioned at 200nm away from the t-tubule membrane at the angle 120°. The scanned line in Cheng *et al.* experiment was located at 200nm from the surface of the t-tubule. doi:10.1371/journal.pcbi.1000972.g004

of technical reasons). Since it has been suggested that the dye could not affect Ca^{2+} entry via L-type channels [63,64], the same global LCC flux (as in Figs. 4–5) was used during this numerical

experiment. Figures 6E–I show predicted Ca^{2+} signals arising from the ionic influx via L-type Ca^{2+} channels during voltage-clamp stimulation with LCC and NCX pathways heterogeneously

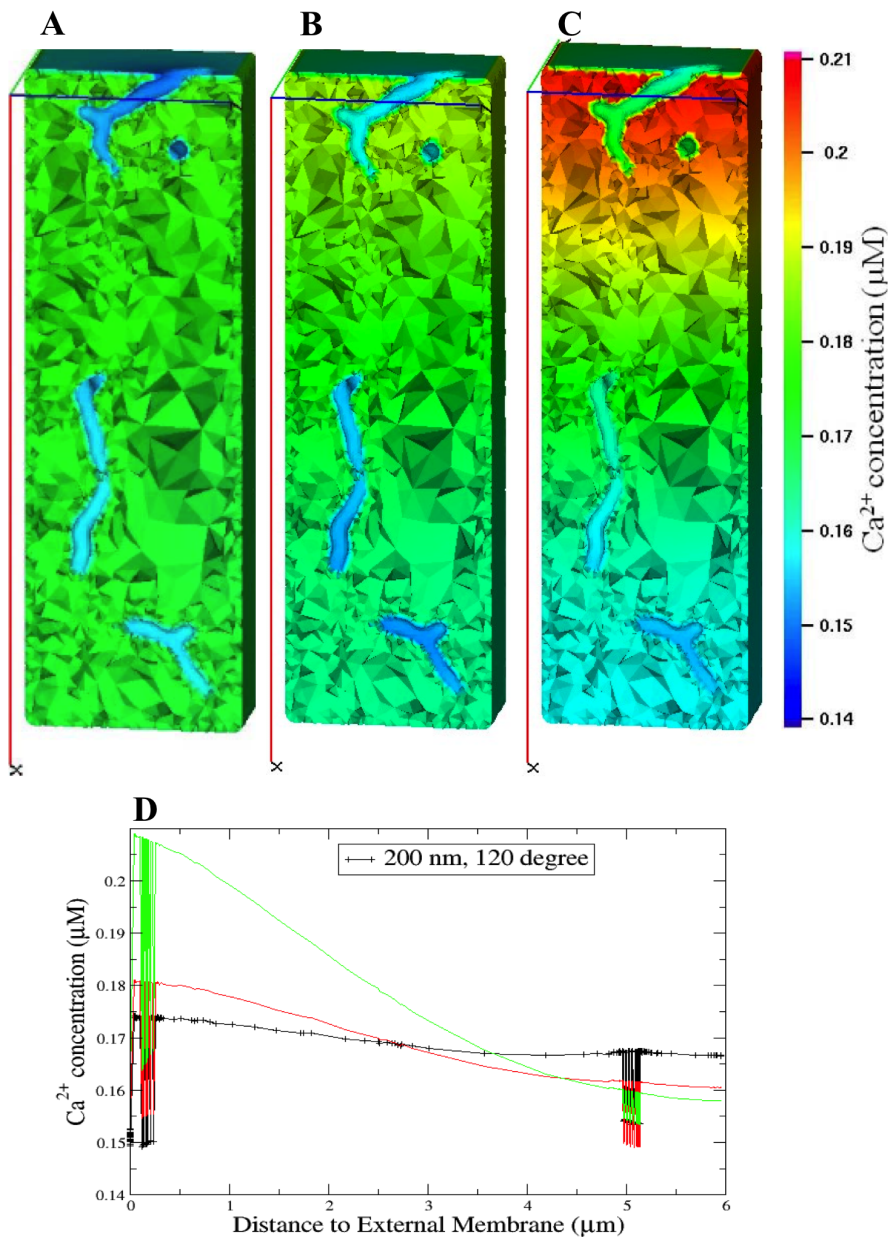


Figure 5. Calcium concentration distributions at Ca²⁺ peak in the presence of 100 μM Fluo-3. (A–C) 3-D views of the Ca²⁺ concentration distribution at Ca²⁺ peak of 76 ms. In (D) the spatial profiles at Ca²⁺ peak along the scanning line of interest are compared. L-type Ca²⁺ flux density heterogeneously distributed along the t-tubule membrane (A and *black plots* in D). L-type Ca²⁺ flux density six times higher and uniform via t-tubule membrane (B and *red plots* in D). L-type Ca²⁺ flux density uniformly distributed via the sarcolemma (C and *green plots* in D). In (A–B) Na⁺/Ca²⁺ flux density was three times higher in the t-tubule and Ca²⁺ leak homogeneously distributed. In (C) Na⁺/Ca²⁺ exchanger and Ca²⁺ leak were homogeneously distributed via the sarcolemma.
doi:10.1371/journal.pcbi.1000972.g005

distributed (as in Fig. 4F). The calculated global NCX and Ca²⁺ leak currents are shown in Figs. 6C–D, respectively.

The model predicts here that the spread and buffer capacity of 100 μM Fluo-3 were able to mask completely the pronounced spatial non-uniformities in [Ca²⁺]_i distribution that will occur during the Ca²⁺ influx when the SR Ca²⁺ metabolism is inhibited [5]. Figure 6 also illustrates, that detectible differences in [Ca²⁺]_i are found when $t < 150$ ms and that [Ca²⁺]_i was more evenly distributed when $t > 150$ ms, (see also Video S2, *left panel*). The removing of the mobile Ca²⁺ dye from the solution increased SCH($t_{\text{Ca-peak}}$) by 1.635 folds, SCH($t_{70\text{ms}}$) by 2.63 folds, SCH($_{[\text{Ca}]_{\text{peak}}}$) by 2.72 folds,

SCH($t_{100\text{ms}}$) by 4.46 folds, and SCH($t_{200\text{ms}}$) by 8.65 folds (compare Fig. 6G with Fig. 4I where Fluo-3 was 100 μM). Additional findings are that: (1) upon depolarization NCX operated again in Ca²⁺ entry mode; (2) the reversal of current of NCX upon returning to resting voltage of -50mV increased additionally the current rate (compare Fig. 6C with Fig. 4C); (3) the global and local [Ca²⁺]_i peaks increased while the times to peak remained unchanged, i.e. $\sim 76\text{ms}$ (compare Figs. 6E and 6G with Figs. 4E and 4I); (4) the predicted 3-D [Ca²⁺]_i distribution at Ca²⁺ peak was strongly non-uniform (compare Fig. 6I and Fig. 5A); (5) upon repolarization initially [Ca²⁺]_i rapidly dropped, the following [Ca²⁺]_i decay was slow and the equilibrium

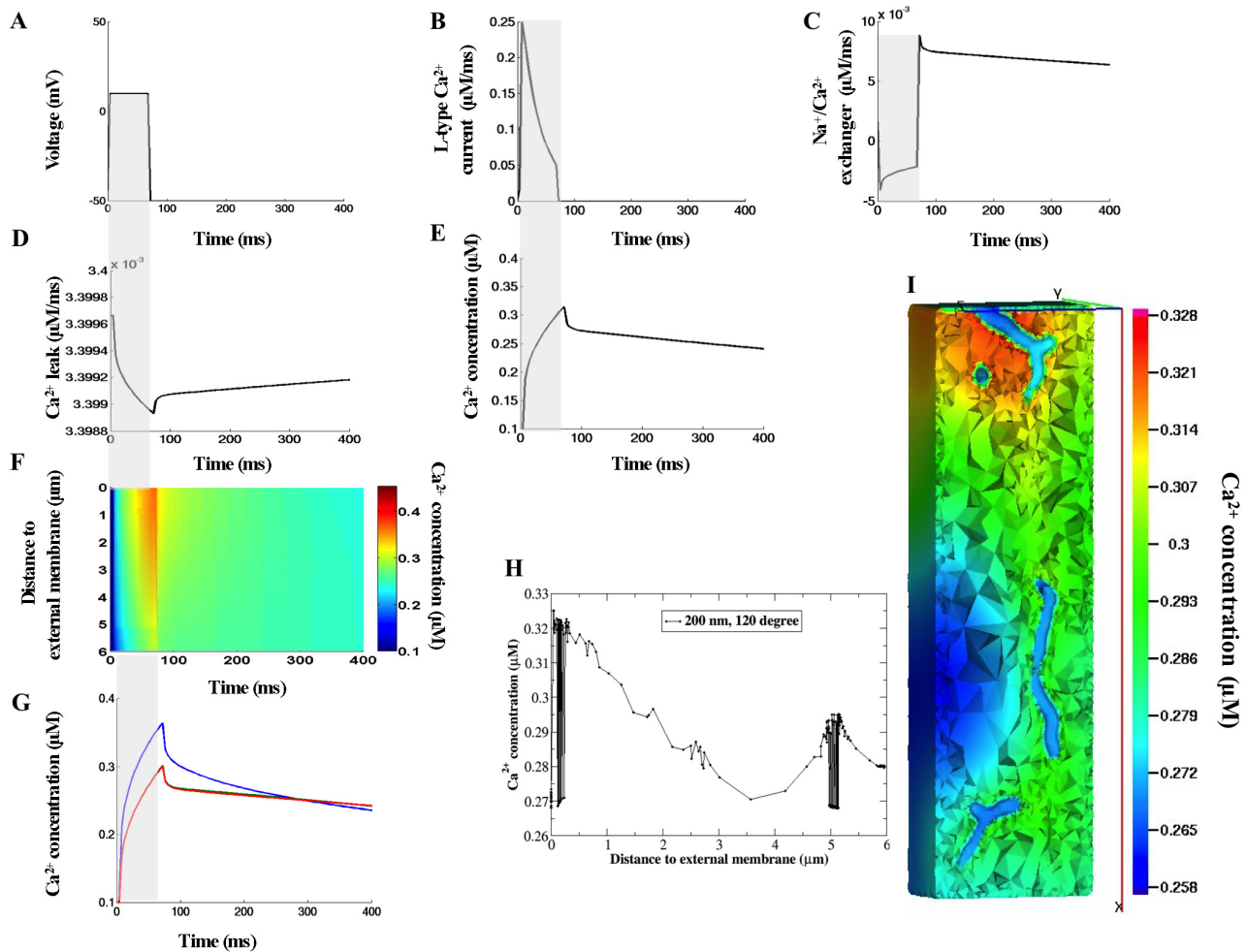


Figure 6. Model predictions in the absence of Fluo-3 and Ca²⁺ pathways heterogeneously distributed via the cell membrane. (A–B) The voltage-clamp protocol and whole-cell L-type Ca²⁺ current used in this set of simulations. (C–D) The predicted global Na⁺/Ca²⁺ and Ca²⁺ leak currents. (E–F) The global Ca²⁺ transient and Ca²⁺ concentrations visualized as line-scan image in the transverse cell direction. (G) Local Ca²⁺ transients taken at three featured spots along the scanning line (0.17 μm – blue lines, 3.09 μm – green lines, 5.45 μm – red lines). In (H–I) the spatial profile of Ca²⁺ along the scanning line and 3-D [Ca²⁺]_i distribution at Ca²⁺ peak of 76 ms are shown. In this numerical experiment the scanned line was positioned at 200nm away from the t-tubule membrane at the angle 120°. doi:10.1371/journal.pcbi.1000972.g006

was not reached even after 400 ms (Fig. 6E and Fig. 6G). Interesting model prediction is that larger, steeper and heterogeneous [Ca²⁺]_i gradients with regard to those predicted in the presence of 100 μM Fluo-3 could be expected in the narrow sub-sarcolemmal space (compare *left panel* in Video S1 with *left panel* in Video S2). Interestingly, no visible differences in the local Ca²⁺ time-courses were found again (as with 100 μM Fluo-3) when the line-scan was positioned 200 nm away from the t-tubule surface at angle 60° or at 50, 100, 200, 300 or 400 nm at different angles (*data not shown*).

Endogenous buffer mobility. The conjecture made in the present model, that the endogenous calmodulin and ATP are mobile Ca²⁺ buffers, allowed us to examine how the mobility of these buffers would affect the Ca²⁺ dynamics and membrane flux time-courses within this irregular micro-domain. Figure 7 shows a simulation in which ATP (as CaATP) and calmodulin (as CaCal) were immobilized and Fluo-3 indicator removed from the solution. Under these conditions Ca²⁺ diffuses more slowly toward the center of the cell during the analyzed interval, resulting in a higher Ca²⁺ concentrations near the outer cell edge (compare line-scan images in Fig. 7F and Fig. 6F, see Video S2).

Figure 7 also demonstrates that the peak of local Ca²⁺ transient near the external membrane increased while [Ca²⁺]_i peaks in the featured spots, 3.09 μm and 5.45 μm , decreased (see *dashed lines* in Fig. 7G). Here analysis suggests that assuming CaATP and CaCal stationary versus CaATP and CaCal mobile increased SCH($t_{\text{Ca-peak}}$) by 1.17 folds, SCH($t_{70 \text{ ms}}$) by 1.47 folds, SCH($t_{[\text{Ca}]_i\text{-peak}}$) by 1.49 folds, SCH($t_{100 \text{ ms}}$) by 1.92 folds, and SCH($t_{200 \text{ ms}}$) by 3.54 folds (see Fig. 7G). The results also indicate that the predicted local changes in [Ca²⁺]_i gradients affected global NCX, Ca²⁺-leak and [Ca²⁺]_i time-courses: (1) upon repolarization global J_{NCX} slightly decreased while $J_{\text{M-leak}}$ slightly increased; (2) [Ca²⁺]_i peak decreased but the time to peak remained unchanged (~76 ms), (see *dashed lines* in Figs. 7C–E). Finally, these simulations demonstrated that under these conditions (i.e. immobilizing all endogenous Ca²⁺ buffers) Ca²⁺ could escape the tight control of membrane voltage in some sub-cellular regions giving rise of cytosolic Ca²⁺ wave initiated at the sarcolemma (see Video S2 *right panel* - near the outer cell edge Ca²⁺ wave was initiated ($t \sim 60$ ms) but very soon after ~12ms this wave faltered).

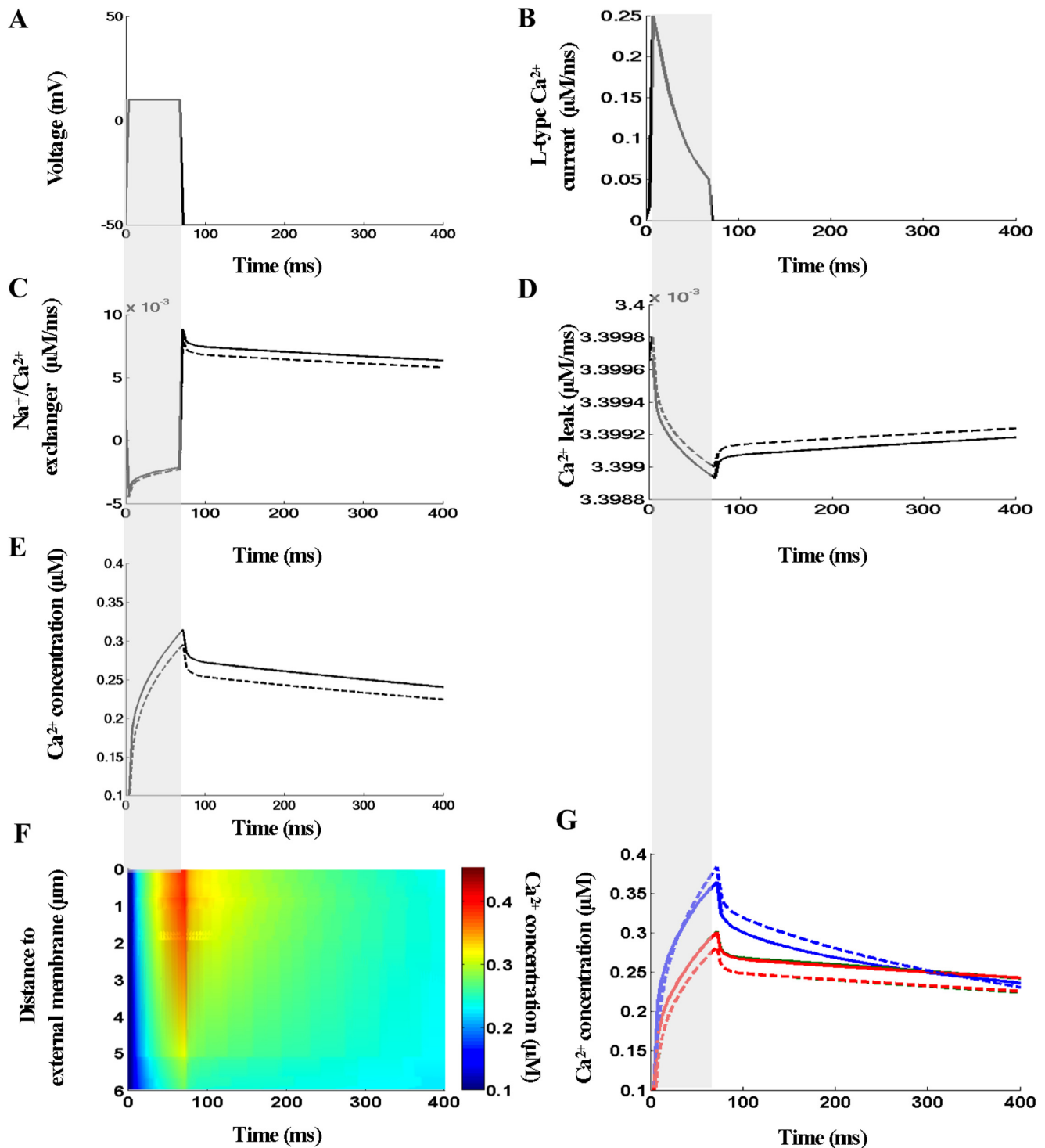


Figure 7. Effects of ATP and camodulin mobility on subcellular [Ca²⁺]_i signals. (A–B) The voltage-clamp protocol and whole-cell L-type Ca²⁺ current. (C–E) Quantitative comparison of the effects of buffer mobility on the global Na⁺/Ca²⁺ and Ca²⁺ leak currents and global Ca²⁺ transient (*solid lines* - CaATP and CaCal mobile, *dashed lines* - CaATP and CaCal stationary). (F) Line-scan image with CaATP and CaCal immobilized. (G) Quantitative comparison of the effects of buffer mobility on the local Ca²⁺ transients. During this numerical experiment Fluo-3 was zero, Ca²⁺ fluxes heterogeneously distributed via the sarcolemma, line-scan positioned at 200nm away from the t-tubule membrane at the angle 120°. Along the scanning line the featured spots were chosen to be the same as in Fig. 6G. doi:10.1371/journal.pcbi.1000972.g007

Contribution of Na⁺-Ca²⁺ exchange to sub-cellular excitation-contraction coupling. In this study, we also examined the effects of NCX inhibition on the voltage-clamp

induced Ca²⁺ signals in the absence of fluorescent indicator. The inhibition of NCX forward mode was achieved by removing extracellular sodium (i.e. 0 mM [Na⁺]_o). To adjust Ca²⁺ flux via

Ca²⁺ leak to match Ca²⁺ influx via NCX, so that at rest no net movement across the cell membrane to occur, we estimated Ca²⁺ leak constant ($g_{M_leak}^{0mM[Na^+]_e}$) assuming $[Na^+]_e$ zero (see Table 3). Under these conditions NCX operated only in Ca²⁺ entry mode while membrane leak pumped Ca²⁺ out of the cell (see Figs. 8C–D *dashed lines*). Figures 8F–G (see *dashed lines*) show the predicted local $[Ca^{2+}]_i$ transients and the corresponding line-scan image. The line scan-image demonstrates that $[Ca^{2+}]_i$ distribution was again non-uniform but rather different compared to that predicted with 140 mM $[Na^+]_e$ (compare Fig. 8F with Fig. 6F). The results in Fig. 8G demonstrate that: (1) local $[Ca^{2+}]_i$ peaks in the featured spots (0.17 μ m, 3.09 μ m and 5.45 μ m) increased and that this increase was more pronounced near t-tubule mouth; (2) upon repolarization $[Ca^{2+}]_i$ suddenly dropped because $J_{NCX(t=70ms)}$ rate decreased while $J_{M-leak(t=70ms)}$ rate remained unchanged; (3) the decay of Ca²⁺ transient near the outer cell edge was slow; (4) $[Ca^{2+}]_i$ in the featured spots, 3.09 μ m and 5.45 μ m, begun slowly to increase when $t > 70$ ms because $J_{NCX(t > 70ms)}$ rate remained unchanged but $J_{M-leak(t > 70ms)}$ rate slightly decreased. With $[Na^+]_e$ zero versus 140 mM $[Na^+]_e$ SCHs increased: $SCH(t_{[Ca^{2+}]_i\text{-peak}})$ by 1.29 folds; $SCH(t_{70\text{ ms}})$ by 1.4 folds; $SCH(t_{[Ca^{2+}]_i\text{-peak}})$ by 1.43 folds; $SCH(t_{100ms})$ by 1.65 folds; and $SCH(t_{200ms})$ by 3.04 folds (see Fig. 8G). Furthermore, the NCX inhibition had visible effect on the global $[Ca^{2+}]_i$ transient, i.e. global Ca²⁺ peak increased and during membrane repolarization initially $[Ca^{2+}]_i$ suddenly decreased and after that rapidly equilibrated. In agreement with experimental data reported previously [65], the model also predicts increase in global $[Ca^{2+}]_i$ peak and no changes in the time to peak when $[Na^+]_e$ is completely substituted with 140 mM Li⁺, (see *dashed line* in Fig. 8E). New finding is that, with zero extracellular Na⁺, the Ca²⁺ signal spreads from the external membrane to the cell center as continuum Ca²⁺ wave initiated after 56 ms but very soon this wave faltered (see Video S3, *right panel*).

Discussion

The model with realistic transverse-axial t-tubule microanatomy provides new insights on how the Ca²⁺ signaling is regulated in rats

The current study attacks a difficult problem on how to incorporate the structural-based biological information, critical for the subcellular and cellular function, into sophisticated computational investigations. Pursuing this goal we developed a 3-D continuum model of Ca²⁺ signaling in rat ventricular cells that incorporates the realistic transverse-axial t-tubule topology and considers geometric irregularities and inhomogeneities in the distribution of ion-transporting proteins. The t-tubule micro-architecture was extracted from the Hayashi *et al.* two-photon imaging data in mice [6]. Because currently high-fidelity geometric models representing the realistic t-tubule micro-architecture in rats are not available, in this study we used the Yu's *et al.* geometric model in mice [28,29]. On the basis of experimental data in rats the aqueous sub-cellular volume, accessible to Ca²⁺, was estimated to be ~35–37% [33]. Since the Ca²⁺ signaling in cells is largely governed by Ca²⁺ diffusion and binding to mobile and stationary Ca²⁺ buffers [17–21,23,54–62,66,67], the effect of four Ca²⁺ buffers (Fluo-3, ATP, calmodulin, TN) was considered.

The model was validated against published experimental data on Ca²⁺ influx, membrane protein distributions and Ca²⁺ diffusion in rat cells treated with ryanodine and thapsigargin to inhibit the SR Ca²⁺ metabolism [2,5,10,12,15,26,35–43]. We found that with 100 μ M Fluo-3 the results more closely resemble the Cheng's *et al.* experimental data [5] when the LCC density increases ~1.7 fold

along the t-tubule length and the NCX density is assumed three times higher in the t-tubule. An interesting finding is that with LCC six times and NCX three times higher and uniform in the t-tubule, the predicted fluctuations in the $[Ca^{2+}]_i$ profiles were within the range of experimental noise [5]. Strongly non-uniform spatial Ca²⁺ gradients and propagation of Ca²⁺ wave are predicted, not observed in Cheng *et al.* experiment, when the LCC and NCX were uniformly distributed along the sarcolemma.

The model studies with 100 μ M Fluo-3 indicate also that the $[Ca^{2+}]_i$ gradients depend on the diffusion distances in the axial and cell surface directions. Thus, when the LCC were distributed uniformly the local Ca²⁺ peak in radial depth (5.96 μ m) decreased from ~1.5 fold while in the other cell directions (1 μ m \times 1 μ m) no significant changes were found. Redistributing the amount of Ca²⁺ pumped via the cell membrane (i.e. increasing LCC current density along the t-tubule) while keeping total Ca²⁺ flux unchanged, lowered Ca²⁺ gradients near the surface membrane and increased Ca²⁺ levels in the cell interior (see Video S1). The results also showed that with 100 μ M Fluo-3 and Ca²⁺ flux heterogeneously distributed along the sarcolemma, the computed average $[Ca^{2+}]_i$ peak (160–185 nM) is comparable to the measured of about 163 nM [5] and that the NCX redistribution alone yields to qualitatively similar $[Ca^{2+}]_i$ profiles.

It should be noted, that in our previous work we used the simplified t-tubule geometry (assuming cylindrical shape) to simulate the Ca²⁺ dynamics in rats [19]. This idealistic t-tubule model also predicts the lack of systematic differences in the fluorescence Ca²⁺ signal when the Ca²⁺ transporters were distributed heterogeneously along the sarcolemma. Thus, the following question arises: How these new computational studies based on more realistic t-tubule structural model will further advance our current knowledge on the cell excitability and Ca²⁺ cycling in rats? First, in agreement with experiment [2–12] current study confirms that due to the branched t-tubule microstructure high and steep sub-sarcolemmal $[Ca^{2+}]_i$ gradients could occur throughout the whole cell volume [2–6,33], (see Video S1). Note, Lu *et al.* idealistic t-tubule model predicts high and steep sub-sarcolemmal $[Ca^{2+}]_i$ gradients only in the transverse cell direction [19]. Second, our realistic t-tubule model predicts non-uniformities in $[Ca^{2+}]_i$ distribution along the depth of the t-tubule when $t < 100$ ms (see Fig. 4F and Video S1 *left panel*) while this was not the case when the t-tubule geometry is assumed cylindrical (Fig. 4g in Lu *et al.*, [19]). Third, interesting finding is that no visible differences in the local Ca²⁺ profiles are predicted when the line-scan was positioned at different. Note, due to the technical limitations the Cheng *et al.* experiment is not able to suggest where and how exactly the scanned line is positioned with regard to the specific t-tubule [5].

A surprising and important finding of this study is that the spread and buffer capacity of 100 μ M Fluo-3 were able to mask completely the pronounced spatial $[Ca^{2+}]_i$ non-uniformities that would occur during the Ca²⁺ influx in the absence of dye (see Video S2 *left panel* - SR Ca²⁺ metabolism inhibited, LCC and NCX transporters heterogeneously distributed). Here the simulations demonstrated that with zero Fluo-3 the local and global Ca²⁺ peaks increased while the time of Ca²⁺ rise remained unchanged. The predicted sub-sarcolemmal $[Ca^{2+}]_i$ gradients were heterogeneous along the cell membrane and larger and steeper compared to those with 100 μ M Fluo-3. The NCX and Ca²⁺ leak time-courses were also affected due to increased local free $[Ca^{2+}]_i$ levels. It is interesting that under these conditions no differences in the local Ca²⁺ time-courses were found (as with 100 μ M Fluo-3) when the line-scan was positioned at different angles and distances. To test further the model we also examined how the mobility of

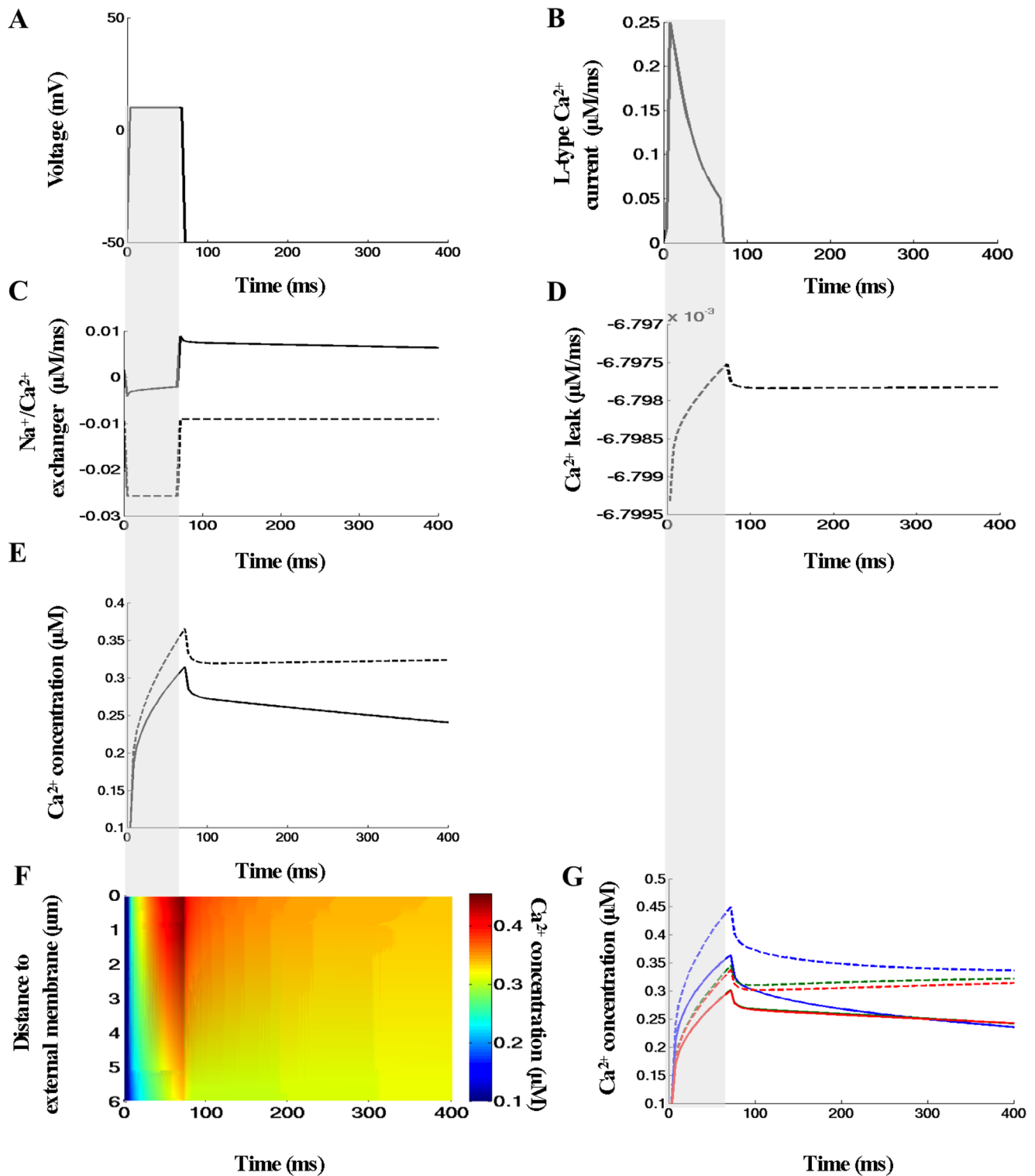


Figure 8. Effects of reduced extracellular $[\text{Na}^+]_e$ on subcellular $[\text{Ca}^{2+}]_i$ signals. (A–B) The voltage-clamp protocol and whole-cell L-type Ca^{2+} current. (C) Quantitative comparison of the effects of changes in $[\text{Na}^+]_e$ on the global $\text{Na}^+/\text{Ca}^{2+}$ flux (*solid lines* - $[\text{Na}^+]_e$ 140 mM, *dashed lines* - zero $[\text{Na}^+]_e$). (D) Predicted Ca^{2+} leak with zero $[\text{Na}^+]_e$. (E) Quantitative comparison of the effects of changes in $[\text{Na}^+]_e$ on the global Ca^{2+} transient. (F) Calcium concentrations visualized as line-scan images in transverse cell direction with zero $[\text{Na}^+]_e$. (G) Quantitative comparison of the effects of changes in $[\text{Na}^+]_e$ on local Ca^{2+} transients. In this numerical experiment Fluo-3 was zero, Ca^{2+} fluxes heterogeneously distributed via the sarcolemma, the line-scan positioned at 200nm away from the t-tubule membrane at the angle 120° . Along the scanning line the featured spots were chosen to be the same as in Fig. 6G.

doi:10.1371/journal.pcbi.1000972.g008

endogenous Ca²⁺ buffers (ATP and calmodulin) and altered extracellular Na⁺ ([Na⁺]_e) would affect the Ca²⁺ signals in the absence of fluorescence dye when the Ca²⁺-transporters are heterogeneously distributed. The results showed that when ATP and calmodulin were immobilized Ca²⁺ diffuses slowly toward the center of the cell, resulting in higher Ca²⁺ concentrations near the outer cell edge. When the NCX forward mode was inhibited (assuming [Na⁺]_e = 0 mM) the local [Ca²⁺]_i peaks increased and this increase was more pronounced near the outer cell edge. New findings are that under these conditions near the outer cell edge Ca²⁺ wave was initiated while this was not the case when ATP and calmodulin were mobile and [Na⁺]_e 140 mM (see Video S2 and Video S3).

Taken together, these studies provide compelling evidence that (1) the exogenous Fluo-3 acts as a significant buffer and carrier for Ca²⁺, and that (2) the use of 100 μM Fluo-3 during the experiment can sensitively alter the realistic Ca²⁺ distribution. A new question, however, arises: Based on the above model findings what could be the underlying mechanism(s) for the predicted heterogeneous Ca²⁺ concentrations gradients in the absence of Fluo-3? A reasonable answer is that the Ca²⁺ movement and distribution inside the cell rely strongly not only on the specific cell micro-architecture and Ca²⁺ transporters distribution but also on the presence of endogenous mobile and stationary Ca²⁺ buffers (ATP, calmodulin, troponin C - known to affect strikingly the Ca²⁺ dynamics) [12,17–21,23,27,67]. In support of this hypothesis, our simulations studies revealed that in the absence of Fluo-3: (1) the stationary Ca²⁺ buffer troponin C imposed stronger diffusion barrier for Ca²⁺ that resulted in larger and steeper sub-sarcolemmal Ca²⁺ gradients; (2) in the cell interior, owing on their sheer buffering capacity, Ca²⁺ buffers (troponin C, ATP, calmodulin) tended to slow down additionally the propagation of Ca²⁺ so that ATP and calmodulin spreading alone was not able to contribute the spatially uniform Ca²⁺ profiles to be achieved; (3) immobilizing the endogenous Ca²⁺ buffers slowed down the Ca²⁺ movement from the cell periphery to the center leading to build-up of large sub-sarcolemmal Ca²⁺ gradients and subsequent initiation of Ca²⁺ wave. It is important to mention that the Lu *et al.* idealistic t-tubule model predicts completely different 3-D [Ca²⁺]_i distributions with zero Fluo-3, SR Ca²⁺ metabolism inhibited and Ca²⁺ transporters heterogeneously distributed [19].

Limitations of the model and future directions

Important limitations of the current modeling approach are: (1) the relatively small size of the model compartment that contains only a single realistic t-tubule shape and spans by just a half-sarcomere inside the ventricular myocyte; and (2) the assumption that the model compartment is a repeating unit inside the cell. The structural studies, however, provide evidence that in rodent ventricular myocytes the realistic t-tubule network is quite complex, (see Fig. 1A), [6]. The above limitations can be overcome in the future by extending the current geometric model toward more realistic models containing several t-tubules, whole-cell t-tubule network or other sub-cellular organelles (including mitochondria, SR, nuclei). This would allow building an improved geometric models representing more correctly the cell segment of interest and help to gain further insights of how the Ca²⁺-signaling in rat ventricular myocytes is regulated in the absence or presence of SR Ca²⁺ release and uptake [20–23,66,67]. However, it is equally important to mention here, that although the limitations (1–2) this model in a first approximation may yield insights across the whole-cell scale of biological organization. It allows simulating the global Ca²⁺ signal (computed from the line-scan image in Fig. 4F) that roughly would reproduce the whole-cell Ca²⁺

transient in the Cheng *et al.* experiment due to observed spatial similarities in [Ca²⁺]_i (see Fig. 1B–1C in [5]). This assumption enables also investigating how the whole-cell Ca²⁺ signal is regulated by the realistic t-tubule microanatomy, by 3-D distributions of ion-transporting proteins, by mobile dye or endogenous mobile and stationary Ca²⁺ buffers. It should be noted, that the common pool modeling approaches could not be used to investigate these effects [10,24,25].

Important limitation of this study is also that we assume that the ion flux pathways are continuously distributed throughout the t-tubule membrane. Immunohistochemical studies, however, suggest that L-type Ca²⁺ channels appear to be concentrated as discrete clusters in the dyadic clefts (narrow spaces between LCC and RyR) distributed regularly along the t-tubule membrane at relatively small distances of ~0.68 μm, [12,38,68]. It is interesting to mention that in contrast to Soeller and collaborators data in rats [12], Hayashi *et al.* data in mice [6] suggest that the dyadic clefts are distributed irregularly along the t-tubule branches. In addition, NCX appears to be absent from the longitudinal tubules [42]. Thus, the above data clearly imply that localized concentration of LCC or NCX flux pathways could result in larger sub-sarcolemmal Ca²⁺ gradients and local membrane currents that will affect differently the spatial Ca²⁺ profiles as predicted with the current model. Further extending of our current t-tubule model toward more realistic geometric models containing dyadic cleft topology and L-type Ca²⁺ channel clustering could help to better understand how the Ca²⁺ signaling is regulated in the heart.

Finally, in the present model the effects of two endogenous Ca²⁺ mobile buffers (ATP, calmodulin) and one stationary Ca²⁺ buffer (troponin C) were considered only. The ventricular cells, however, contain other stationary Ca²⁺ buffers (including phospholipids, myosin, calsequestrin) or small and high mobile Ca²⁺ binding molecules (ADP, AMP) that were not included in the model (or may be other stationary and mobile buffers that have not been identified yet), [18,24,69].

Conclusions

Simulations presented in this study demonstrate that the more accurate knowledge of transverse-axial t-tubule microanatomy and protein distributions along the sarcolemma is important to better understand the mechanisms regulating the excitation-contraction coupling in rat ventricular myocytes. The results demonstrate that Ca²⁺ movement from the cell membrane to the cell interior relies also strongly on the presence of mobile and stationary Ca²⁺ buffers, including the Ca²⁺ indicator dye. The key findings are: (1) the model predicts lack of detectible differences in the fluorescence Ca²⁺ signals at the peripheral and deep myoplasm when the membrane Ca²⁺ flux is heterogeneously distributed along the sarcolemma; (2) 100 μM mobile Fluo-3 is able to mask the pronounced spatial non-uniformities in the [Ca²⁺]_i distribution that would occur when the SR Ca²⁺ metabolism is inhibited; (3) during the Ca²⁺ influx alone, large and steep Ca²⁺ gradients are predicted in the narrow sub-sarcolemmal space (~40–50 nm in depth); (4) in rodents the branched t-tubule topology, the punctuate spatial distribution of Ca²⁺ flux along the sarcolemma and the endogenous Ca²⁺ buffers actually function to inhibit Ca²⁺ waves. Improved functional and structural computational models are needed to guide the experiments and to test further our understanding of how the t-tubule microanatomy and protein distributions regulate the normal cell function or cell cycle under certain pathologies. To our best knowledge, this study is the first attempt to use the finite element methods to investigate the intracellular Ca²⁺ responses in physiologically realistic transverse-axial t-tubule geometry.

Supporting Information

Video S1 100 μM Fluo-3: Calcium flux heterogeneously distributed (*left panel*); Calcium flux higher and uniform in the t-tubule (*middle panel*); Calcium flux uniformly distributed (*right panel*).

Found at: doi:10.1371/journal.pcbi.1000972.s001 (5.45 MB AVI)

Video S2 Zero Fluo-3 and calcium flux heterogeneously distributed: ATP and calmodulin mobile (*left panel*); ATP and calmodulin immobile (*right panel*).

Found at: doi:10.1371/journal.pcbi.1000972.s002 (4.05 MB AVI)

Video S3 Zero Fluo-3 and calcium flux heterogeneously distributed: Extracellular sodium 140 mM (*left panel*); Zero extracellular sodium (*right panel*).

Found at: doi:10.1371/journal.pcbi.1000972.s003 (4.07 MB AVI)

References

- Asghari P, Schulson M, Scriven DR, Martens G, Moore ED (2009) Axial tubules of rat ventricular myocytes form multiple junctions with the sarcoplasmic reticulum. *Biophys J* 96: 4651–4660.
- Brette F, Orchard C (2003) T-tubule function in mammalian cardiac myocytes. *Circ Res* 92: 1182–1192.
- Brette F, Sallé L, Orchard CH (2006) Quantification of calcium entry at the T-tubules and surface membrane in rat ventricular myocytes. *Biophys J* 90: 381–389.
- Brette F, Orchard C (2007) Resurgence of Cardiac T-Tubule Research. *Physiology* 22: 167–173.
- Cheng H, Cannell MB, Lederer WJ (1994) Propagation of excitation-contraction coupling into ventricular myocytes. *Pflügers Arch* 428: 415–417.
- Hayashi T, Martone ME, Yu Z, Thor A, Doi M, et al. (2009) Three-dimensional electron microscopy reveals new details of membrane systems for Ca²⁺ signaling in the heart. *J Cell Science* 122: 1005–1013.
- Martone ME, Edelman VM, Thor A, Young SJ, Lamont SP, et al. (1997) Three dimensional analysis of transverse tubules in normal and failing heart: A combined confocal and high voltage electron microscope study. *Microscopy and Microanalysis* 3: 231–232.
- Orchard C, Brette F (2008) t-Tubules and sarcoplasmic reticulum function in cardiac ventricular myocytes. *Cardiovasc Res* 77: 237–244.
- Orchard CH, Pásek M, Brette F (2009) The role of mammalian cardiac t-tubules in excitation-contraction coupling: experimental and computational approaches. *Exp Physiol* 94: 509–519.
- Pásek M, Brette F, Nelson A, Pearce C, Qaiser A, et al. (2008) Quantification of t-tubule area and protein distribution in rat cardiac ventricular myocytes. *Prog Biophys Mol Biol* 96: 244–257.
- Soeller C, Cannell MB (1999) Examination of the transverse tubular system in living cardiac rat myocytes by 2-photon microscopy and digital image – processing techniques. *Circ Res* 84: 266–275.
- Soeller C, Jayasinghe ID, Li P, Holden AV, Cannell MB (2009) Three-dimensional high-resolution imaging of cardiac proteins to construct models of intracellular Ca²⁺ signalling in rat ventricular myocytes. *Exp Physiol* 94: 496–508.
- Song LS, Guatimosim S, Gómez-Viquez L, Sobie EA, Ziman A, et al. (2005) Calcium biology of the transverse tubules in heart. *Ann N Y Acad Sci* 1047: 99–111.
- Bers DM (2008) Calcium cycling and signaling in cardiac myocytes. *Annu Rev Physiol* 70: 23–49.
- Despa S, Brette F, Orchard CH, Bers DM (2003) Na/Ca exchange and Na/K-ATPase function are equally concentrated in transverse tubules of rat ventricular myocytes. *Biophys J* 85: 3388–3396.
- Berridge MJ, Bootman MD, Roderick HL (2003) Calcium signaling: dynamics, homeostasis and remodeling. *Nat Rev Mol Cell Biol* 4: 517–529.
- Soeller C, Cannell MB (1997) Numerical simulation of local calcium movements during L-type calcium channel gating in the cardiac diad. *Biophys J* 73: 97–111.
- Michailova A, DelPrincipe F, Egger M, Niggli E (2002) Spatiotemporal features of Ca²⁺ signaling, buffering and diffusion in atrial myocytes with inhibited sarcoplasmic reticulum. *Biophys J* 83: 3134–3151.
- Lu S, Michailova A, Saucerman JJ, Cheng Y, Yu Z, et al. (2009) Multi-Scale Modeling in Rodent Ventricular Myocytes: Contributions of structural and functional heterogeneities to excitation-contraction coupling. *IEEE Eng Med Biol* 28: 46–57.
- Izu L, Wier WG, Balke C (2001) Evolution of cardiac calcium waves from stochastic calcium sparks. *Biophys J* 80: 103–120.
- Izu LT, Means SA, Shadid NJ, Chen-Izu Ye, Balke CW (2006) Interplay of Ryanodine Receptor Distribution and Calcium Dynamics. *Biophys J* 91: 95–112.
- Koh X, Srinivasan B, Ching H, Levchenko A (2006) A 3-D Monte Carlo analysis of role of dyadic space geometry in spark generation. *Biophys J* 90: 1999–2014.
- Keizer J, Smith GD, Ponce-Dawson S, Pearson JE (1998) Saltatory Propagation of Ca²⁺ Waves by Ca²⁺ Sparks. *Biophys J* 75: 595–600.
- Shannon TR, Wang F, Puglisi J, Weber C, Bers DB (2004) A Mathematical Treatment of Integrated Ca Dynamics within the Ventricular Myocyte. *Biophys J* 87: 3351–3371.
- Sher AA, Noble PJ, Hinch R, Gavaghan DJ, Noble D (2008) The role of the Na⁺/Ca²⁺ exchangers in Ca²⁺ dynamics in ventricular myocytes. *Prog Biophys Mol Biol* 96: 377–398.
- Zahradnikova A, Kubalova Z, Pavelková J, Györke S, Zahradník I (2004) Activation of calcium release assessed by calcium release-induced inactivation of calcium current in rat cardiac myocytes. *Am J Physiol Cell Physiol* 286: C330–C341.
- Cheng Y, Yu Z, Hoshijima M, Holst M, McCulloch A, et al. (2010) Effects of membrane calcium flux localizations and realistic t-tubule geometry on cardiac excitation-contraction coupling. *Biophys J* 98, Supplement 1: 551a.
- Yu Z, Holst M, Cheng Y, McCammon JA (2008) Feature-Preserving Adaptive Mesh Generation for Molecular Shape Modeling and Simulation. *J Mol Graph Model* 26: 1370–1380.
- Yu Z, Holst MJ, Hayashi T, Bajaj CL, Ellisman MH, et al. (2008) Three-dimensional geometric modeling of membrane-bound organelles in ventricular myocytes: Bridging the gap between microscopic imaging and mathematical simulation. *J Structural Biology* 164: 304–313.
- Leeson TS (1978) The transverse tubular (T) system of rat cardiac muscle fibers as demonstrated by tannic acid mordanting. *Can J Zool* 56: 1906–1916.
- Pásek M, Simurda J, Christé G, Orchard CH (2008) Modelling the cardiac transverse-axial tubular system. *Prog Biophys Mol Biol* 96: 226–243.
- Satoh H, Delbridge LM, Blatter LA, Bers DM (1996) Surface:volume relationship in cardiac myocytes studied with confocal microscopy and membrane capacitance measurements: species-dependence and developmental effects. *Biophys J* 70: 1494–1504.
- Bers DM (2001) Excitation-contraction coupling and cardiac contractile force. Dordrecht, Boston, London: Kluwer Academic Press.
- Page E (1978) Quantitative ultrastructural analysis in cardiac membrane physiology. *Am J Physiol* 235: C146–C158.
- Scriven DR, Dan P, Moore EW (2000) Distribution of proteins implicated in excitation-contraction coupling in rat ventricular myocytes. *Biophys J* 79: 2682–2691.
- Scriven DR, Klimek A, Lee KL, Moore EW (2002) The molecular architecture of calcium microdomains in rat cardiomyocytes. *Ann NY Acad Sci* 976: 488–499.
- Jayasinghe ID, Cannell MB, Soeller C (2009) Organization of ryanodine receptors, transverse tubules, and sodium-calcium exchanger in rat myocytes. *Biophys J* 97: 2664–2673.
- Brette F, Leroy J, Le Guennec JY, Sallé L (2006) Ca²⁺ currents in cardiac myocytes: Old story, new insights. *Prog Biophys Mol Biol* 91: 1–82.
- Leach RN, Desai JC, Orchard CH (2005) Effect of cytoskeleton disruptors on L-type Ca channel distribution in rat ventricular myocytes. *Cell Calcium* 38: 515–526.
- Scriven DR, Klimek A, Asghari P, Bellve K, Moore EW (2005) Caveolin-3 is adjacent to a group of extradiadic ryanodine receptors. *Biophys J* 89: 1893–1901.
- Yang Z, Pascarel C, Steele DS, Komukai K, Brette F, et al. (2002) Na⁺-Ca²⁺ exchange activity is localized in the T-tubules of rat ventricular myocytes. *Circ Res* 91: 315–322.
- Thomas MJ, Sjaastad I, Andersen K, Helm PJ, Wasserstrom JA, et al. (2003) Localization and function of the Na⁺/Ca²⁺-exchanger in normal and detubulated rat cardiomyocytes. *J Mol Cell Cardiol* 35: 1325–1337.
- Kieval RS, Bloch JR, Lindenmayer JE, Ambesi A, Lederer WJ (1992) Immunofluorescence localization of the Na-Ca exchanger in heart cells. *Am J Physiol* 263: C545–C550.

Acknowledgments

The authors thank Shaoying Lu (Urbana-Champaign, University of Illinois) for the valuable advices and discussions and Yuhuan Fu for technical assistance. We also thank the reviewers of the manuscript for useful suggestions. The SMOL and FETK source codes are available to download from <http://mccammon.ucsd.edu/smol> and <http://www.fetk.org>, respectively.

Author Contributions

Conceived and designed the experiments: APM. Performed the experiments: YC. Analyzed the data: YC ADM APM. Contributed reagents/materials/analysis tools: YC ZY MH MJH JAM APM. Wrote the paper: YC JAM APM.

44. Yu Z, Holst M, McCammon JA (2008) High-Fidelity Geometric Modelling for Biomedical Applications. *Finite Elem Anal Des* 44: 715–723.
45. Bank R, Holst M (2003) A New Paradigm for Parallel Adaptive Meshing Algorithms. *SIAM Review* 45: 291–323.
46. Holst M (2001) Adaptive numerical treatment of elliptic systems on manifolds. *Adv Comput Math* 15: 139–191.
47. Cheng Y, Suen JK, Zhang D, Bond SD, Zhang Y, et al. (2007) Finite Element Analysis of the Time-Dependent Smoluchowski Equation for Acetylcholinesterase Reaction Rate Calculations. *Biophys J* 92: 3397–3406.
48. Cheng Y, Suen JK, Radić Z, Bond SD, Holst M, et al. (2007) Continuum Simulations of Acetylcholine Diffusion with Reaction-determined Boundaries in Neuromuscular Junction Models. *Biophys Chem* 127: 129–139.
49. Cheng Y, Chang C, Yu Z, Zhang Y, Sun M, et al. (2008) Diffusional Channeling in the Sulfate Activating Complex: Combined Continuum Modeling and Coarse-grained Brownian Dynamics Studies. *Biophys J* 95: 4659–4667.
50. Ortega F (1996) The General Mesh Viewer. Available: <http://www.generalmeshviewer.com/>. Accessed 1 September 2010.
51. Vaught A (1996) Graphing with Gnuplot and Xmgr. *Linux J*. Available: <http://www.linuxjournal.com/issue/28>. Accessed 1 September 2010.
52. Collins-Sussman B, Fitzpatrick BW, Pilato CM (2002) Version Control with Subversion. Available: <http://subversion.tigris.org/>. Accessed 1 September 2010.
53. Bers DM, Barry WH, Despa S (2003) Intracellular Na⁺ regulation in cardiac myocytes. *Cardiovasc Res* 57: 897–912.
54. Allbritton NL, Meyer T, Stryer L (1992) Range of messenger action of calcium ion and inositol 1,4,5-triphosphate. *Science* 258: 1812–1815.
55. Kushmerick MJ, Podolsky RJ (1969) Ionic mobility in muscle cells. *Science* 166: 1297–1298.
56. Safford RE, Bassingthwaight EA, Bassingthwaight JB (1978) Diffusion of water in cat ventricular myocardium. *J Gen Physiol* 72: 513–538.
57. Zhou Z, Neher E (1993) Mobile and immobile calcium buffers in bovine adrenal chromaffin cells. *J Physiol* 469: 245–273.
58. Wagner J, Keizer J (1994) Effects of rapid buffers on Ca²⁺ diffusion and Ca²⁺ oscillations. *Biophys J* 67: 447–456.
59. Gabso M, Neher E, Spira ME (1997) Low mobility of the Ca²⁺ buffers in axons of cultured Aplysia neurons. *Neuron* 18: 473–481.
60. Baylor SM, Hollingworth S (1998) Model of sarcomeric Ca²⁺ movements, including ATP Ca²⁺ binding and diffusion, during activation of frog skeletal muscle. *J Gen Physiol* 112: 297–316.
61. Tang Y, Schlumpberger T, Kim T, Lueker M, Zucker RS (2000) Effects of mobile buffers on facilitation: Experimental and computer studies. *Biophys J* 78: 2735–2751.
62. Ramay HR, Jafri MS, Lederer WJ, Sobie EA (2010) Predicting local SR Ca²⁺ dynamics during Ca²⁺ wave propagation in ventricular myocytes. *Biophys J* 98: 2515–2523.
63. Soeller C, Crossman D, Gilbert R, Cannell MB (2007) Analysis of ryanodine receptor clusters in rat and human cardiac myocytes. *Proc Natl Acad Sci USA* 104: 14958–14963.
64. Grantham CJ, Cannell MB (1996) Ca²⁺ influx during the cardiac action potential in guinea pig ventricular myocytes. *Circ Res* 79: 194–200.
65. Sheehan KA, Blatter LA (2003) Regulation of junctional and non-junctional sarcoplasmic reticulum calcium release in excitation-contraction coupling in cat atrial myocytes. *J Physiol* 546: 119–135.
66. Niggli E (1999) Ca(2+) Sparks in Cardiac Muscle: Is There Life Without Them? *News Physiol Sci* 14: 129–134.
67. Jafri MS, Keizer J (1995) On the roles of Ca²⁺ diffusion, Ca²⁺ buffers, and the endoplasmic reticulum in IP₃-induced Ca²⁺ waves. *Biophys J* 69: 2139–2153.
68. Pasek M, Simurda J, Orchard CH, Christé G (2008) A model of the guinea-pig ventricular cardiac myocyte incorporating a transverse-axial tubular system. *Prog Biophys Mol Biol* 96: 258–280.
69. Michailova A, Lorentz W, McCulloch AD (2007) Modeling transmural heterogeneity of K_{ATP} current in rabbit ventricular myocytes. *Am J Physiol* 293: C542–C557.
70. Hinch R, Greenstein JL, Tanskanen AJ, Xu L, Winslow RL (2004) A simplified local control model of calcium induced calcium release in cardiac ventricular myocytes. *Biophys J* 87: 3723–3736.